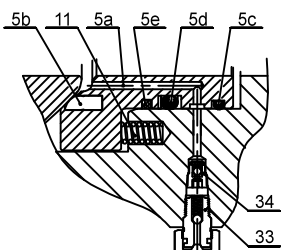
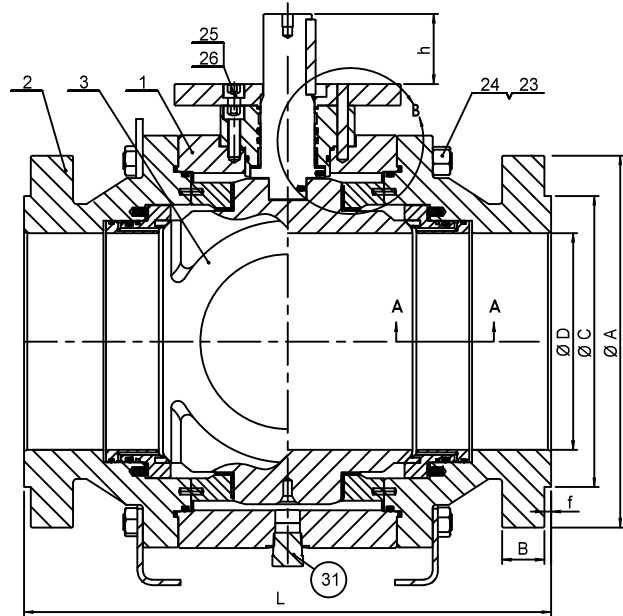
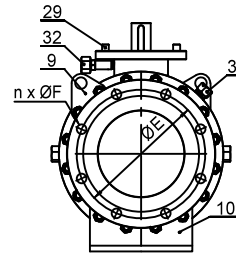
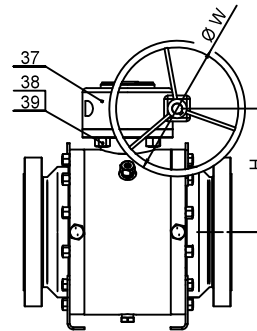


DETAIL B



DETAIL A-A



NOTES:

1. BASIC DESIGN PER ASME B16.34 AND API6D;
2. END FLANGE PER ASME B16.5;
3. FACE TO FACE DIMENSIONS PER ASME B16.10;
4. PRESSURE TESTS PER API598;
5. FIRE SAFE DESIGN PER API607.

VALVE SIZE		DIMENSIONS							600#			WEIGHT unit:lb (Kg)
NPS	UNIT	ØA	B	ØC	ØE	n-ØF	f	ØD	L	H _(Ref.)	ØW	
24"	INCH	37.0	4.0	27.25	33.0	24-Ø2.0	0.25	23.27	55	31.3	31.5	10846
	MM	940	102	692.0	838	24-Ø51	6.35	591	1397	796	800	(4920)
20"	INCH	32.0	3.5	23.0	28.5	24-Ø1.75	0.25	19.25	47	25.9	31.5	5790
	MM	813	89.0	584	724	24-Ø44	6.35	489	1194	658.5	800	(2626)
18"	INCH	29.25	3.25	21.0	25.75	20-Ø1.75	0.25	17.25	43	24.1	27.6	4702
	MM	743	83.0	533.0	654	20-Ø44	6.35	438	1092	612.5	700	(2132)
16"	INCH	27.0	3.0	18.5	23.75	20-Ø1.62	0.25	15.25	39	22.2	27.6	3200
	MM	686	77.0	470.0	603	20-Ø41	6.35	387	991	563	700	(1452)
14"	INCH	23.75	2.75	16.25	20.75	20-Ø1.5	0.25	13.25	35	19.1	27.6	2650
	MM	603	70.0	413	527	20-Ø38	6.35	337	889	486	700	(1202)

ITEM	PART NAME	STANDARD (NACE)	LOW TEMP (NACE)	STAINLESS STEEL (NACE)	Q'ty
1	Body	ASTM A105	A350 LF2	A182 F316	1
2	End Adapters	ASTM A105	A350 LF2	A182 F316	2
3	QS Ball	A182 F316+HC			1
4	Stem	F316 or 17-4PH			1
5a	Seat Ring	A182 F316			2
5b	Seat Insert	PEEK			2
5c	O-Ring	VITON A			2
5d	O-Ring & Back-up ring	VITON A & PTFE			2
5e	Seat Fire Safe Seal	Graphite			2
6	Gland	ASTM A105	A350 LF2	A182 F316	1
7	Plate Trunnion	ASTM A105	A350 LF2	A182 F316	2
8	Gland Plate	ASTM A105	A350 LF2	A182 F316	1
9	Lifting Lug	Carbon Steel		Stainless Steel	2
10	Leg Plate	Carbon Steel		Stainless Steel	2
11	Spring	Inconel X750			--
12	Key	AISI 1045		Stainless Steel	1
13	Stem Fire Safe Seal	Graphite			1
14	Body Fire Safe Seal	SPW.316+Graphite			2
15	Gland Fire Safe Seal	SPW.316+Graphite			1
16	Stem O-Ring & Back-up ring	VITON A & PTFE			2
17	Gland O-Ring	VITON A			1
18	Body O-Ring	VITON A			2
19	DU Bearing	1045+PTFE		316SS+PTFE	2
20	DU Thrust Bearing	1045+PTFE		316SS+PTFE	2
21	Thrust Washer	RPTFE			1
22	DU Bearing	1045+PTFE		316SS+PTFE	1
23	Body Studs	ASTM A193-B7M	ASTM A320-L7M	ASTM A193-B8M	--
24	Body Nuts	ASTM A194-2HM	ASTM A194-7M	ASTM A194-8M	--
25	Gland Bolt	ASTM A193-B7M	ASTM A320-L7M	ASTM A193-B8M	--
26	Gland Plate Bolt	ASTM A193-B7M	ASTM A320-L7M	ASTM A193-B8M	--
27	Parallel Pins	ASTM A276 Gr.316			--
28	Parallel Pins	AISI 1045		ASTM A276 Gr.316	--
29	Parallel Pins	AISI 1045		ASTM A276 Gr.316	2
30	Vent Valve	AISI 316 S/S			1
31	Plug	AISI 316 S/S			1
32	Sealant Injection Fitting	ASTM A105N +Zn	A350 LF2 + Zn	ASTM A276 Gr.316	1
33	Sealant Injection Fitting	ASTM A105N +Zn	A350 LF2 + Zn	ASTM A276 Gr.316	4
34	Check Valve	AISI 316 S/S			4
35	Anti-static Ball	AISI 316 S/S			2
36	Anti-Static Spring	AISI 316 S/S			2
37	Gear Device	ASTM A216 GR.WCB			1
38	Gear Studs	ASTM A193-B7		ASTM A193-B8	--
39	Gear Nuts	ASTM A194-2H		ASTM A194-8	--

Standard materials of construction listed

Quadosphere® CLASS 600 TRUNNION MOUNTED BALL VALVE	NPS 14"~24" CLASS 600# Full Bore	REVISED : E1
	DATE : 10-11-14	DRAWING NUMBER VMC-4714A6W
VATMATIC VALVE AND MANUFACTURING CORP.		