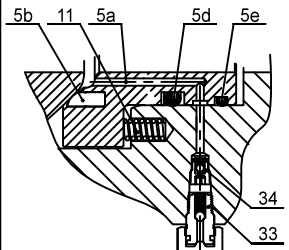
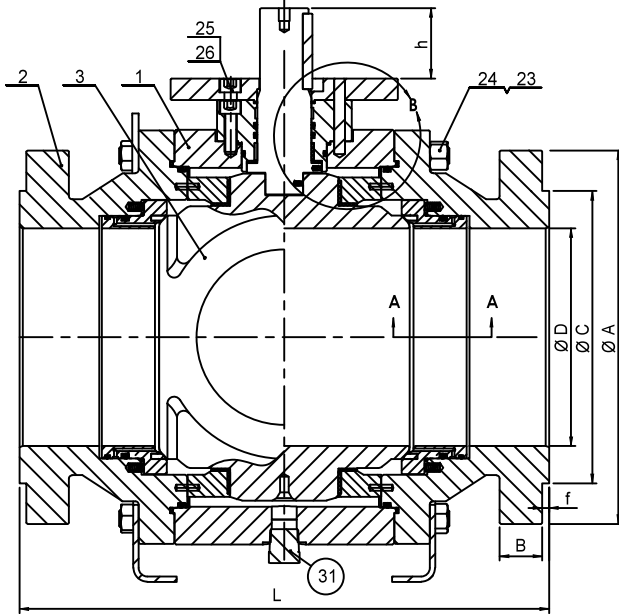
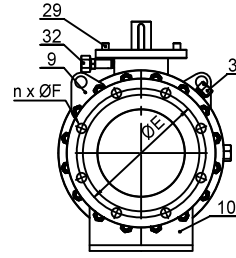
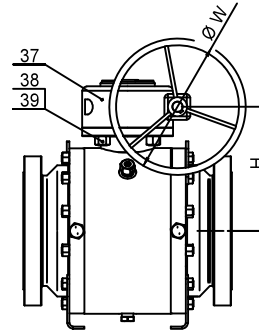


DETAIL B



DETAIL A-A



NOTES:

1. BASIC DESIGN PER ASME B16.34 AND API6D;
2. END FLANGE PER ASME B16.5;
3. FACE TO FACE DIMENSIONS PER ASME B16.10;
4. PRESSURE TESTS PER API598;
5. FIRE SAFE DESIGN PER API607.

ITEM	PART NAME	STANDARD (NACE)	LOW TEMP (NACE)	STAINLESS STEEL (NACE)
1	Body	ASTM A105	A350 LF2	A182 F316
2	End Adapters	ASTM A105	A350 LF2	A182 F316
3	QS Ball	A182 F51 + HC		
4	Stem	A182 F51		
5a	Seat Ring	A182 F51		
5b	Seat Insert	PEEK		
5d	O-Ring & Back-up ring	VITON A & PTFE		
5e	Seat Fire Safe Seal	Graphite		
6	Gland	ASTM A105	A350 LF2	A182 F316
7	Plate Trunnion	ASTM A105	A350 LF2	A182 F316
8	Gland Plate	ASTM A105	A350 LF2	A182 F316
9	Lifting Lug	Carbon Steel		Stainless Steel
10	Leg Plate	Carbon Steel		Stainless Steel
11	Spring	Inconel X750		
12	Key	AISI 1045		Stainless Steel
13	Stem Fire Safe Seal	Graphite		
14	Body Fire Safe Seal	SPW.316+Graphite		
15	Gland Fire Safe Seal	SPW.316+Graphite		
16	Stem O-Ring & Back-up ring	VITON A & PTFE		
17	Gland O-Ring	VITON A		
18	Body O-Ring	VITON A		
19	DU Bearing	1045+PTFE		316SS+PTFE
20	DU Thrust Bearing	1045+PTFE		316SS+PTFE
21	Thrust Washer	RPTFE		
22	DU Bearing	1045+PTFE		316SS+PTFE
23	Body Studs	ASTM A193-B7M	ASTM A320-L7M	ASTM A193-B8M
24	Body Nuts	ASTM A194-2HM	ASTM A194-7M	ASTM A194-8M
25	Gland Bolt	ASTM A193-B7M	ASTM A320-L7M	ASTM A193-B8M
26	Gland Plate Bolt	ASTM A193-B7M	ASTM A320-L7M	ASTM A193-B8M
27	Parallel Pins	ASTM A276 Gr.316		
28	Parallel Pins	AISI 1045		ASTM A276 Gr.316
29	Parallel Pins	AISI 1045		ASTM A276 Gr.316
30	Vent Valve	AISI 316 S/S		
31	Plug	AISI 316 S/S		
32	Sealant Injection Fitting	ASTM A105N +Zn	A350 LF2 + Zn	ASTM A276 Gr.316
33	Sealant Injection Fitting	ASTM A105N +Zn	A350 LF2 + Zn	ASTM A276 Gr.316
34	Check Valve	AISI 316 S/S		
35	Anti-static Ball	AISI 316 S/S		
36	Anti-Static Spring	AISI 316 S/S		
37	Gear Device	ASTM A216 GR.WCB		
38	Gear Studs	ASTM A193-B7		ASTM A193-B8
39	Gear Nuts	ASTM A194-2H		ASTM A194-8

Standard materials of construction listed

VALVE SIZE		DIMENSIONS							900#			WEIGHT unit:lb (Kg)
NPS	UNIT	ØA	B	ØC	ØE	n-ØF	f	ØD	L	H (Ref.)	ØW	
12"	INCH	24.0	3.12	15.0	21.0	20-Ø1.50	0.25	11.92	38.0	17.9	27.6	2400
	MM	610	79.5	381	533.4	20-Ø38.1	6.4	303	965	455	700	(1088)
10"	INCH	21.5	2.75	12.75	18.5	16-Ø1.50	0.25	9.92	33.0	17.1	27.6	1765
	MM	546.1	70	324	469.9	16-Ø38.1	6.4	252	838	435	700	(800)
8"	INCH	18.5	2.50	10.62	15.5	12-Ø1.50	0.25	7.92	29.0	15.08	27.6	1233
	MM	470	63.5	270	393.7	12-Ø38.1	6.4	201	737	383	700	(559)
6"	INCH	15.0	2.19	8.50	12.5	12-Ø1.25	0.25	5.92	24.0	11.9	19.7	848
	MM	381	56	216	317.5	12-Ø32	6.4	150	610	302	500	(385)

Quadrosphere® NPS 6"~12" CLASS 900# Full Bore

CLASS 900 TRUNNION MOUNTED BALL VALVE

REVISED : E1

DATE : 10-11-14

DRAWING NUMBER

VATMATIC VALVE AND MANUFACTURING CORP. VMC-4706A9W