

BRONZE

1/2" FULL FLOW BALL VALVE WITH QUICK DISCONNECT COUPLING (ROTATE TO SUIT INSTALLATION)

1/2" RUBBER HOSE WITH QUICK DISCONNECT COUPLING ON EACH END

1/2" NPT PIPE PLUG

BRONZE 1" FULL FLOW BALL VALVE

2" CLEAN OUT

FOR AIR/VACUUM VALVE
DETAIL SEE
DRWG.NO.
VMC-301A

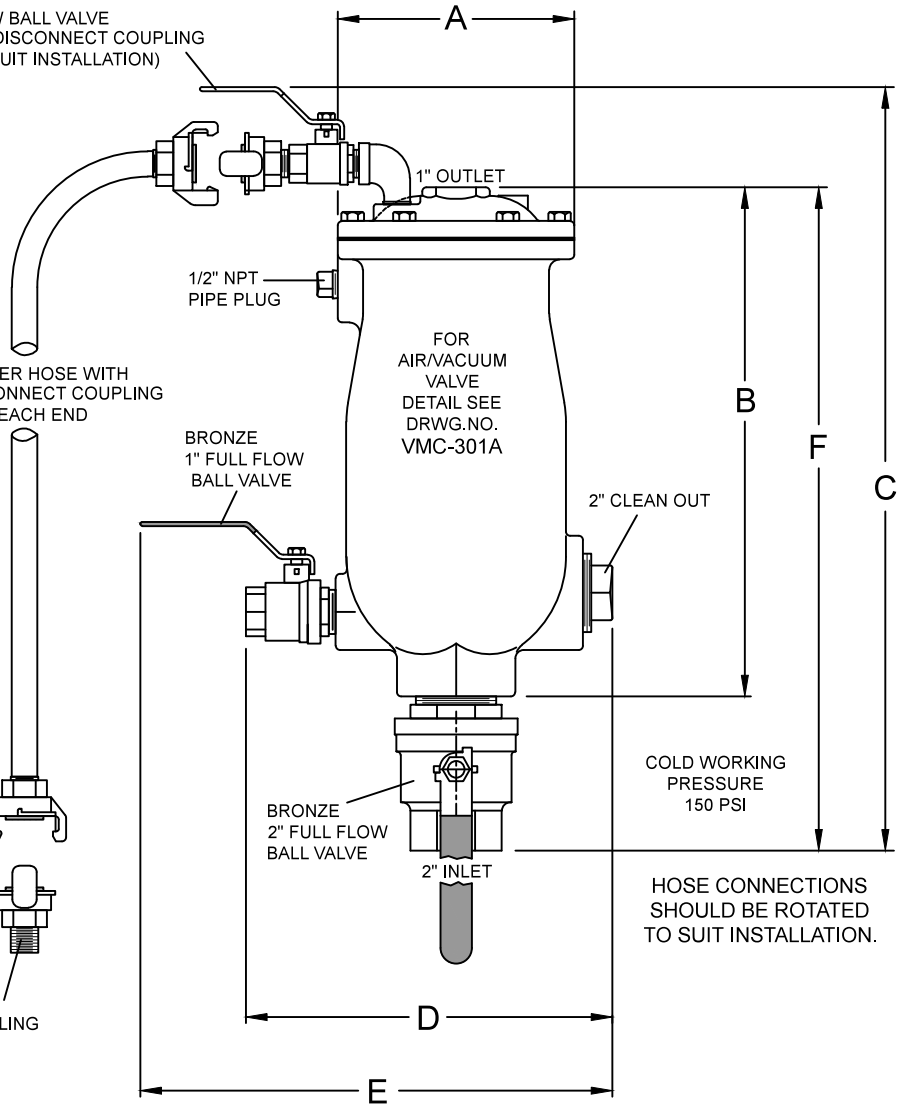
BRONZE 2" FULL FLOW BALL VALVE

2" INLET

COLD WORKING PRESSURE
150 PSI

HOSE CONNECTIONS SHOULD BE ROTATED TO SUIT INSTALLATION.

ADDITIONAL LOOSE COUPLING



VALVE SIZE	MODEL NUMBER	BWA KIT NUMBER	A	B	C	D	E	F
2 X 1	301ABW	SPK-301ABW	7.00	14.94	22.63	10.88	14.00	19.63

BACKWASH ACCESSORIES SHIPPED LOOSE

WASTEWATER AIR/VACUUM VALVE WITH BACKWASH ACCESSORIES

DATE 5-2-14

VALMATIC

VALVE AND MANUFACTURING CORP.

DRWG. NO.

VMC-301ABW