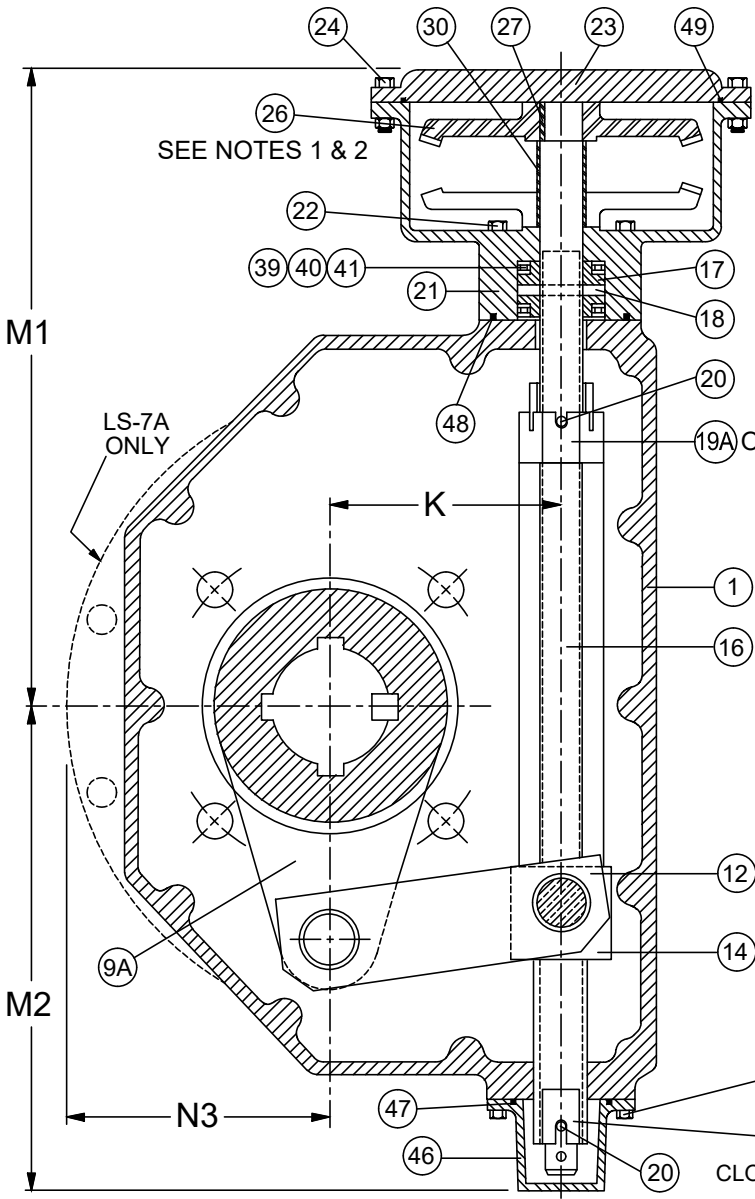


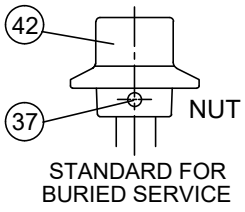
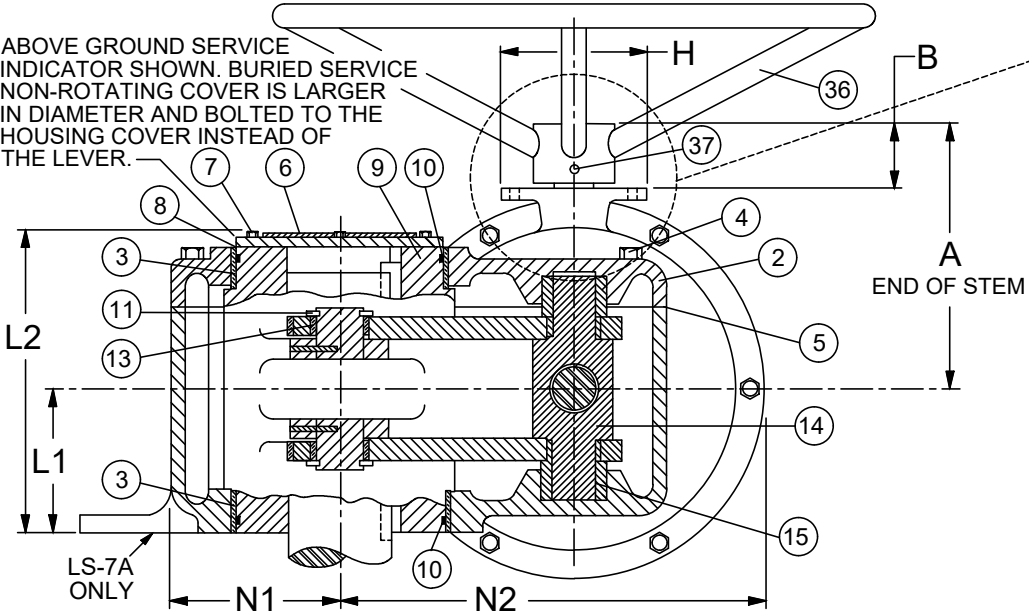
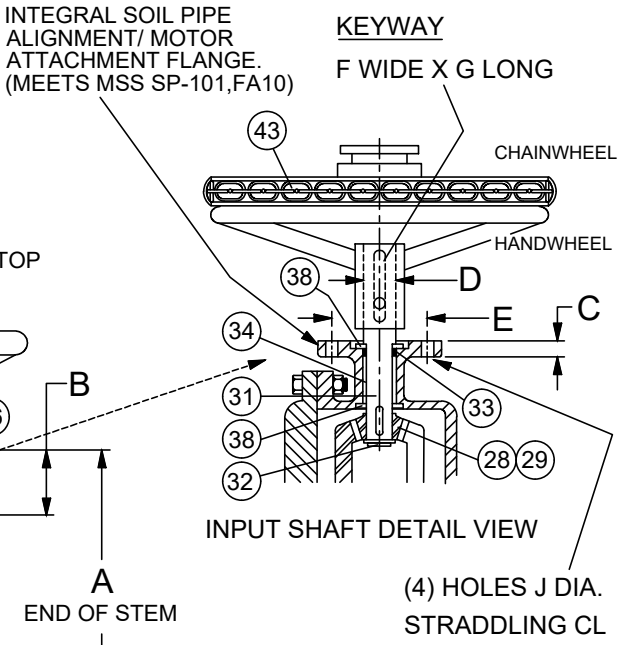
NOTES

1. THE DIRECTION OF OPENING MAY BE REVERSED BY CHANGING THE POSITION OF BEVEL GEAR (26). FOR OPEN LEFT, THE POSITIONS ARE:
LS-5.2A BOTTOM (DOTTED LINE)
LS-6A TOP (SOLID LINE)
LS-7A TOP (SOLID LINE)
2. OPERATOR MEETS AWWA SPECIFICATIONS C-504, LATEST REVISION.
3. SEE DRAWING NO. VM-LS5A.2-M FOR STANDARD MATERIALS OF CONSTRUCTION.



| DIMENSION, INCHES | | | | | | | | | |
|-------------------|--------------|-------|------|------|------|------|------|------|------|
| ACT. SIZE | NO. OF TURNS | A | B | C | D | E | F | G | H |
| LS-5.2A | 178 | 9.39 | 2.39 | 0.63 | 1.25 | 4.00 | 0.25 | 1.94 | 4.88 |
| LS-6A | 276 | 11.98 | 2.39 | 0.63 | 1.25 | 4.00 | 0.25 | 1.94 | 4.88 |
| LS-7A | 547 | 14.04 | 2.39 | 0.63 | 1.25 | 4.00 | 0.25 | 1.94 | 4.88 |

| DIMENSION, INCHES | | | | | | | | | |
|-------------------|------|-------|------|-------|-------|-------|------|-------|-------|
| ACT. SIZE | J | K | L1 | L2 | M1 | M2 | N1 | N2 | N3 |
| LS-5.2A | 0.44 | 8.50 | 5.13 | 10.91 | 23.34 | 17.75 | 6.25 | 12.13 | — |
| LS-6A | 0.44 | 10.50 | 6.50 | 13.59 | 29.44 | 21.88 | 8.63 | 15.13 | — |
| LS-7A | 0.44 | 14.00 | 9.00 | 18.71 | 37.40 | 28.75 | 9.00 | 20.25 | 13.13 |



Revised 10-23-19

TRAVELING NUT ACTUATOR

DATE 8-22-08

DRWG. NO.