

DISC POSITION INDICATOR

SEE DRAWING NO. VM-9806B-M FOR ANSI CLASS 125 MATERIALS OF CONSTRUCTION.

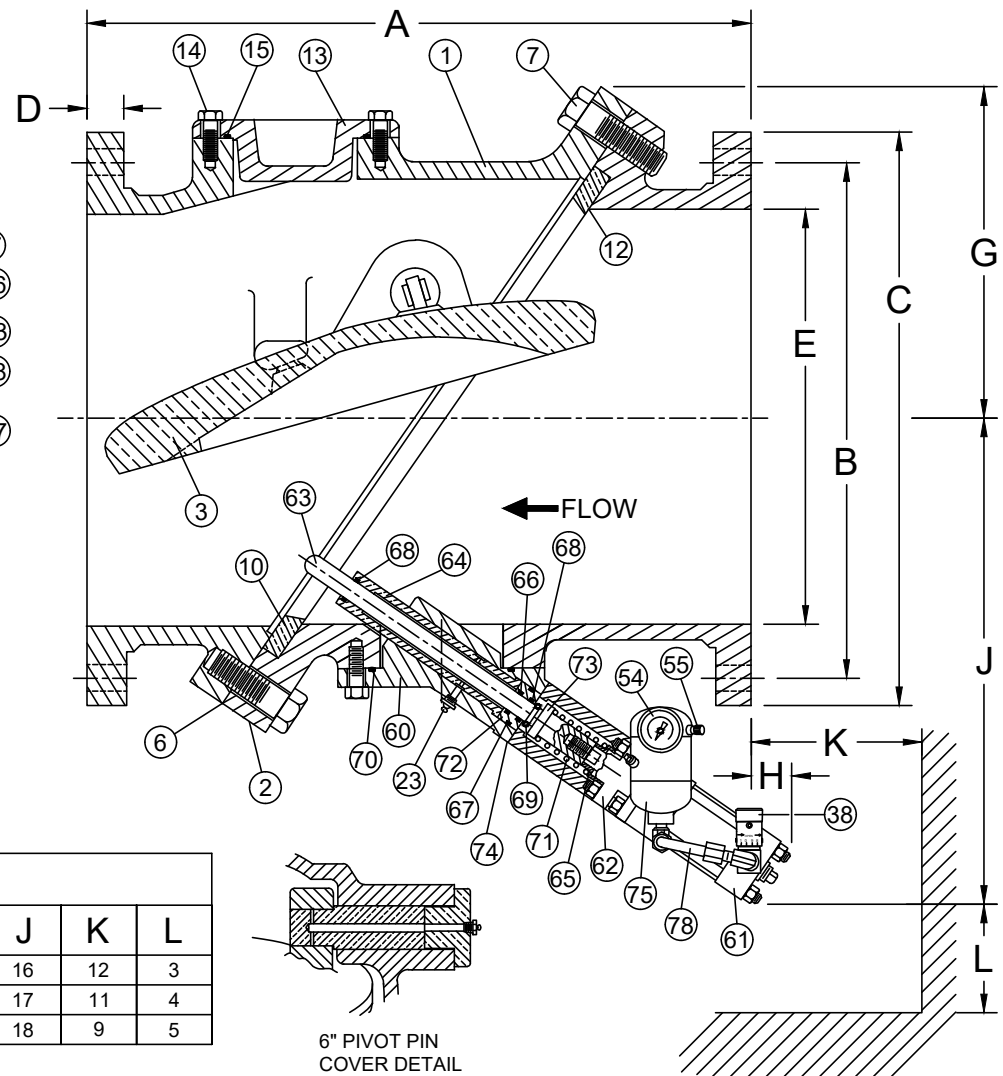
**ANSI CLASS 125**

VALVE SIZE	MODEL NO.	A	B	C	D	E	F	G	BOLT SIZE	NO. OF BOLTS	H	J	K	L
6	9806B	15	9 1/2	11	1	6	16	6 1/2	3/4	8	9	16	12	3
8	9808B	19 1/2	11 3/4	13 1/2	1 1/8	8	19	8	3/4	8	8	17	11	4
10	9810B	24 1/2	14 1/4	16	1 3/16	10	23	9 1/2	7/8	12	5	18	9	5

SEE DRAWING NO. VM-9706B-M FOR ANSI CLASS 250 MATERIALS OF CONSTRUCTION.

**ANSI CLASS 250**

VALVE SIZE	MODEL NO.	A	B	C	D	E	F	G	BOLT SIZE	NO. OF BOLTS	H	J	K	L
6	9706B	15	10 5/8	12 1/2	1 7/16	6	16	6 1/2	3/4	12	9	16	12	3
8	9708B	19 1/2	13	15	1 9/16	8	19	8	7/8	12	8	17	11	4
10	9710B	24 1/2	15 1/4	17 1/2	1 7/8	10	23	9 1/2	1	16	5	18	9	5



6" PIVOT PIN COVER DETAIL

**NOTES:**

DIMENSIONS "K" AND "L" REPRESENT THE MINIMUM CLEARANCE REQUIRED TO REMOVE DASHPOT UNIT. HOWEVER DIMENSION "L" CAN REDUCED TO 1" IF SPACE REQUIREMENTS DICTATE.

FOR VERTICAL FLOW UP INSTALLATION, CONSULT FACTORY.

Revised 4-1-20

**ANSI CLASS 125 and 250 TILTED DISC® CHECK VALVE WITH BOTTOM MOUNTED OIL DASHPOT**

DATE 8-12-80



VALVE AND MANUFACTURING CORP.

DRWG. NO.

**VM-9806B**