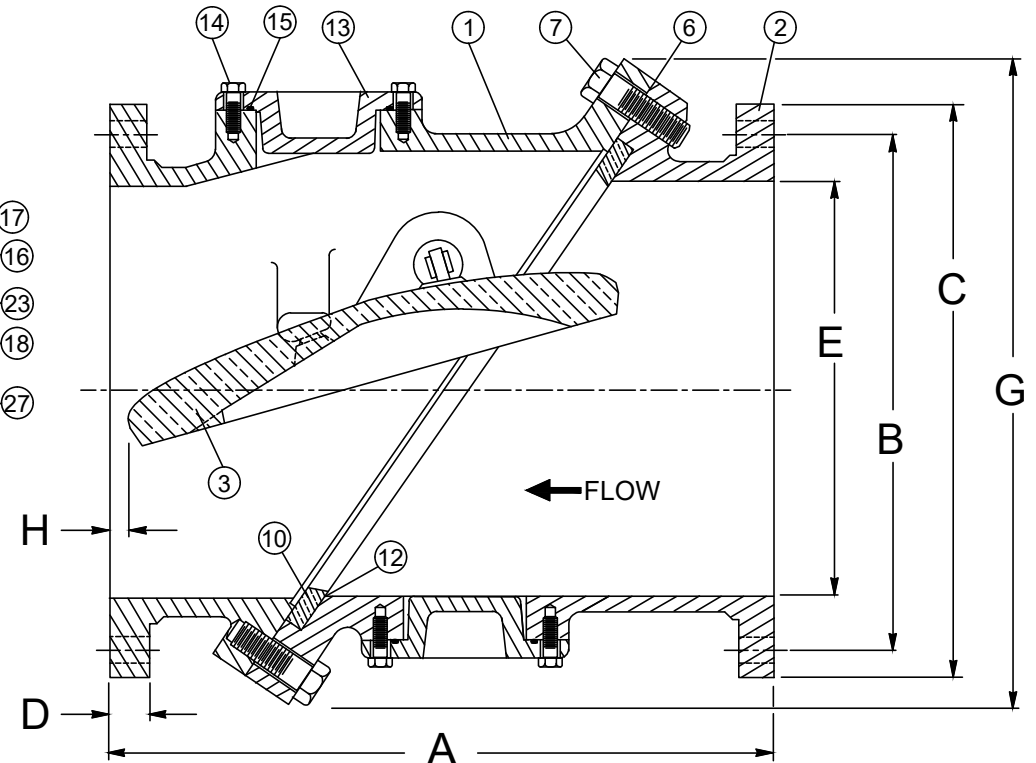
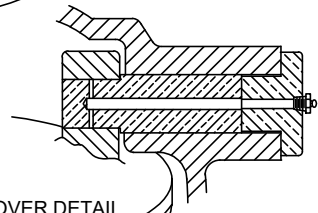


DISC POSITION INDICATOR IS NOT AVAILABLE ON VALVE SIZES 3" THRU 4"

PIVOT PIN COVER DETAIL
VALVE SIZES 3" THRU 6"



INSPECTION HOLE PORTS NOT FURNISHED ON VALVE SIZES 3" THRU 4"

SEE DRAWING NO. VM-9802-M FOR ANSI CLASS 125 MATERIALS OF CONSTRUCTION.

ANSI CLASS 125											
VALVE SIZE	MODEL NO.	A	B	C	D	E	F	G	H	BOLT SIZE	NO. OF BOLTS
3	9803	9 1/2	6	7 1/2	15/16	3	12	9	2 1/4	5/8	4
4	9804	11 1/2	7 1/2	9	15/16	4	13	10	2 5/8	5/8	8
6	9806	15	9 1/2	11	1	6	16	13	2 7/8	3/4	8
8	9808	19 1/2	11 3/4	13 1/2	1 1/8	8	19	16	3 1/2	3/4	8
10	9810	24 1/2	14 1/4	16	1 3/16	10	23	18	4 1/2	7/8	12

SEE DRAWING NO. VM-9702-M FOR ANSI CLASS 250 MATERIALS OF CONSTRUCTION.

ANSI CLASS 250											
VALVE SIZE	MODEL NO.	A	B	C	D	E	F	G	H	BOLT SIZE	NO. OF BOLTS
3	9703	9 1/2	6 5/8	8 1/4	1 1/8	3	12	9	2 1/4	3/4	8
4	9704	11 1/2	7 7/8	10	1 1/4	4	13	10	2 5/8	3/4	8
6	9706	15	10 5/8	12 1/2	1 7/16	6	16	13	2 7/8	3/4	12
8	9708	19 1/2	13	15	1 5/8	8	19	16	3 1/2	7/8	12
10	9710	24 1/2	15 1/4	17 1/2	1 7/8	10	23	18	4 1/2	1	16

Revised 4-1-20

ANSI CLASS 125 and 250 TILTED DISC® CHECK VALVE

DATE 11-16-83



VALVE AND MANUFACTURING CORP.

DRWG. NO.

VM-9802