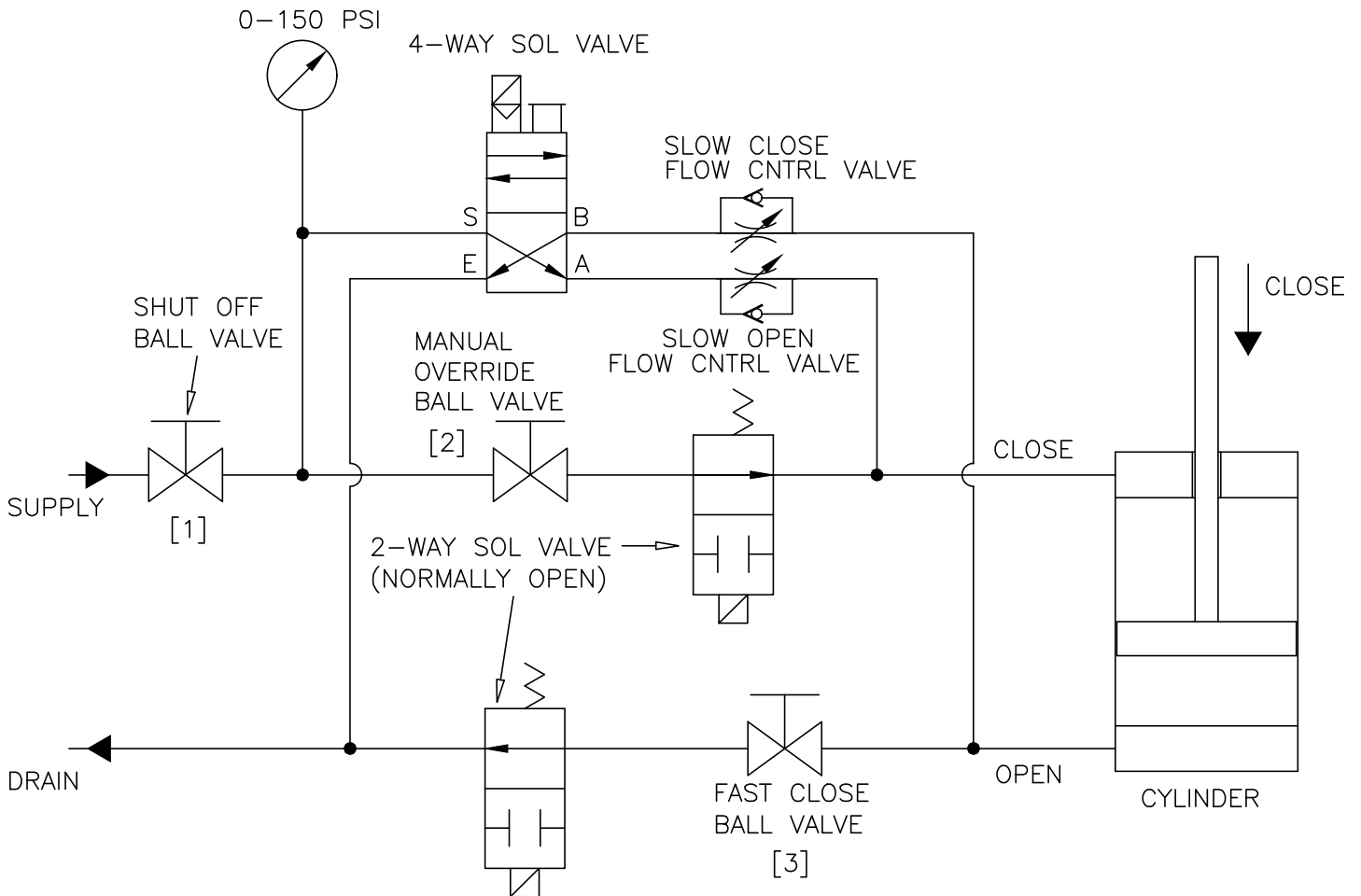


HYDRAULIC PANEL PUMP CONTROL SYSTEM HYDRAULIC SCHEMATIC



NOTES:

1. NORMALLY OPEN. CLOSE FOR LOCK OUT.
2. NORMALLY OPEN. CLOSE FOR MANUAL OVERRIDE.
3. NORMALLY OPEN AT SET POINT FOR FAST CLOSE SPEED OF OPERATION. CLOSE FOR MANUAL OVERRIDE

REV 3-9-18

HYDRAULIC PANEL PUMP CONTROL SYSTEM SCHEMATIC

DATE 6/26/08

VAL-MATIC®

VALVE AND MANUFACTURING CORP.

DRWG. NO.
VM-5HP-W