

COLD WORKING PRESSURE (CWP)
300 P.S.I.

TEST PRESSURE = 1.5 TIMES
COLD WORKING PRESSURE

SEE DRAWING NO. VM-100WS-M FOR STANDARD MATERIALS OF CONSTRUCTION.

VALVE SIZE	MODEL NO.	A	B	INLET SIZE	OUTLET SIZE
1/2"	100WS	6 1/8"	7"	1/2" N.P.T.	1/2" N.P.T.
1"	101WS	7"	9 1/2"	1" N.P.T.	1" N.P.T.
2"	102WS	9 1/2"	12"	2" N.P.T.	2" N.P.T.
3"	103WS	9 1/2"	12"	3" N.P.T.	3" N.P.T.

- | | | | |
|---|--------|----|-----------------|
| 1 | BODY | 7 | COVER BOLT |
| 2 | COVER | 8 | RETAINING SCREW |
| 3 | BAFFLE | 9 | GUIDE BUSHING |
| 4 | SEAT | 14 | PIPE PLUG |
| 5 | FLOAT | 20 | GUIDE SHAFT |
| 6 | GASKET | 40 | DIFFUSER |

Revised 2-10-99

WELL SERVICE AIR VALVE

DATE 8-19-71

VAL-MATIC[®] VALVE AND MANUFACTURING CORP.

DRWG. NO.
VM-100WS

WELL SERVICE AIR VALVE

SERIES NO. 100WS

STANDARD MATERIALS OF CONSTRUCTION

<u>PART NO.</u>	<u>PART NAME</u>	<u>MATERIAL</u>
1	BODY	CAST IRON ASTM A126, CLASS B
2	COVER	CAST IRON ASTM A126, CLASS B
3	BAFFLE	DUCTILE IRON ASTM A536, GRADE 65-45-12
4	SEAT	BUNA-N
5	FLOAT	STAINLESS STEEL T304, ASTM A240
6	GASKET	COMPRESSED NON-ASBESTOS FIBER
7	COVER BOLT	ALLOY STEEL SAE, GRADE 5
8	RETAINING SCREW	STAINLESS STEEL T304, ASTM F593
9	GUIDE BUSHING	STAINLESS STEEL T303, ASTM A582
14	PIPE PLUG	STEEL
20	GUIDE SHAFT	STAINLESS STEEL T303, ASTM A582
40	DIFFUSER	STAINLESS STEEL T304, ASTM A240

NOTE: ALL SPECIFICATIONS AS
LAST REVISED.

Revised 2-10-99

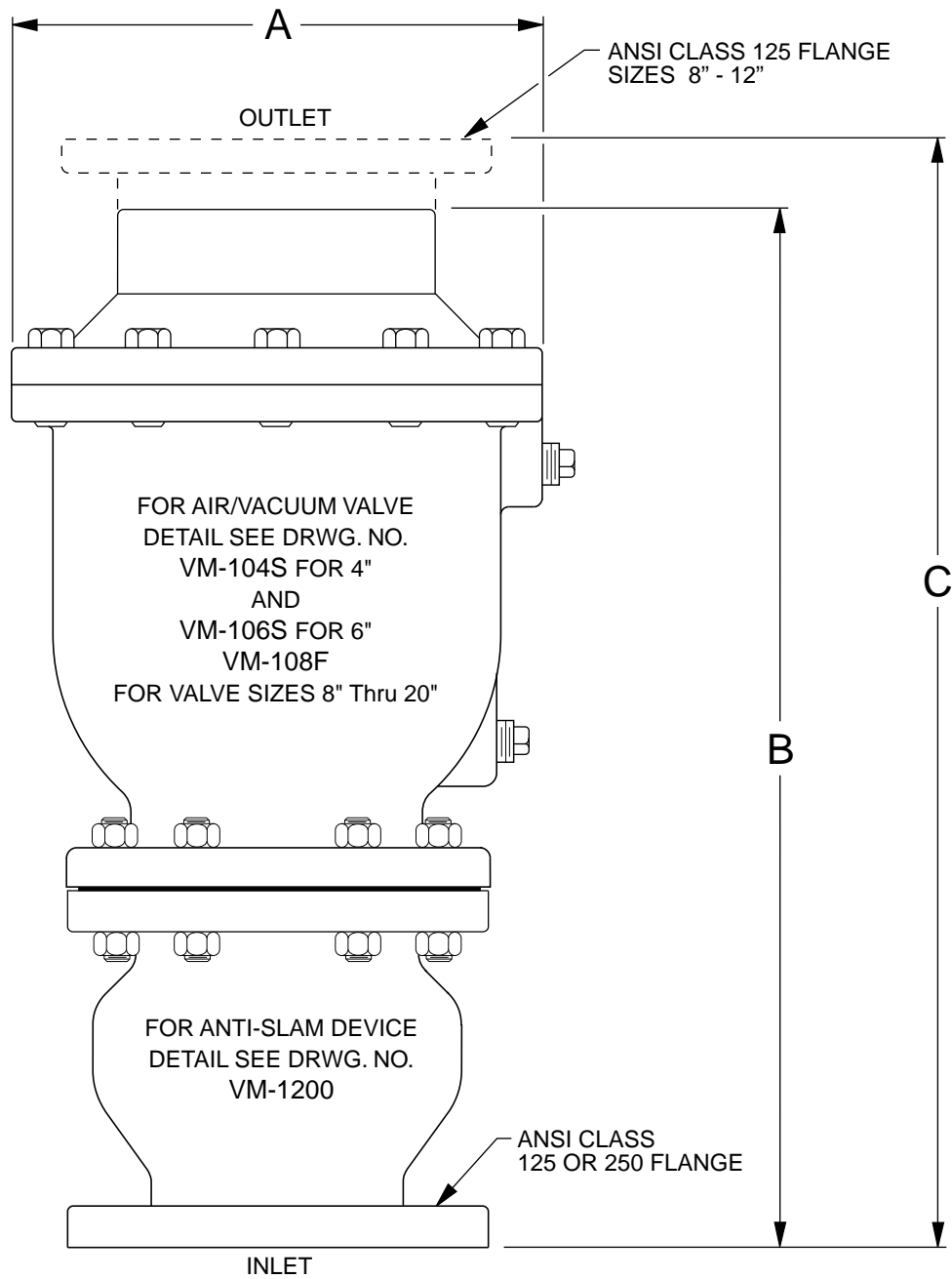
MATERIALS OF CONSTRUCTION

DATE 7/14/71

VAL-MATIC[®] VALVE AND MANUFACTURING CORP.

DRWG. NO.

VM-100WS-M



VALVE SIZE	125# MODEL	250# MODEL	A	B	C	INLET SIZE	OUTLET SIZE
4	104WS	154WS	11 1/2	22 3/4	24 5/16	4" FLG.	4" N.P.T.
6	106WS	156WS	14	28 1/2	29	6" FLG.	6" N.P.T.
8	108WS	158WS	17 1/4	—	35 5/16	8" FLG.	8" FLG.
10	110WS	160WS	20 1/4	—	40 1/16	10" FLG.	10" FLG.
12	112WS	162WS	24	—	44 5/16	12" FLG.	12" FLG.

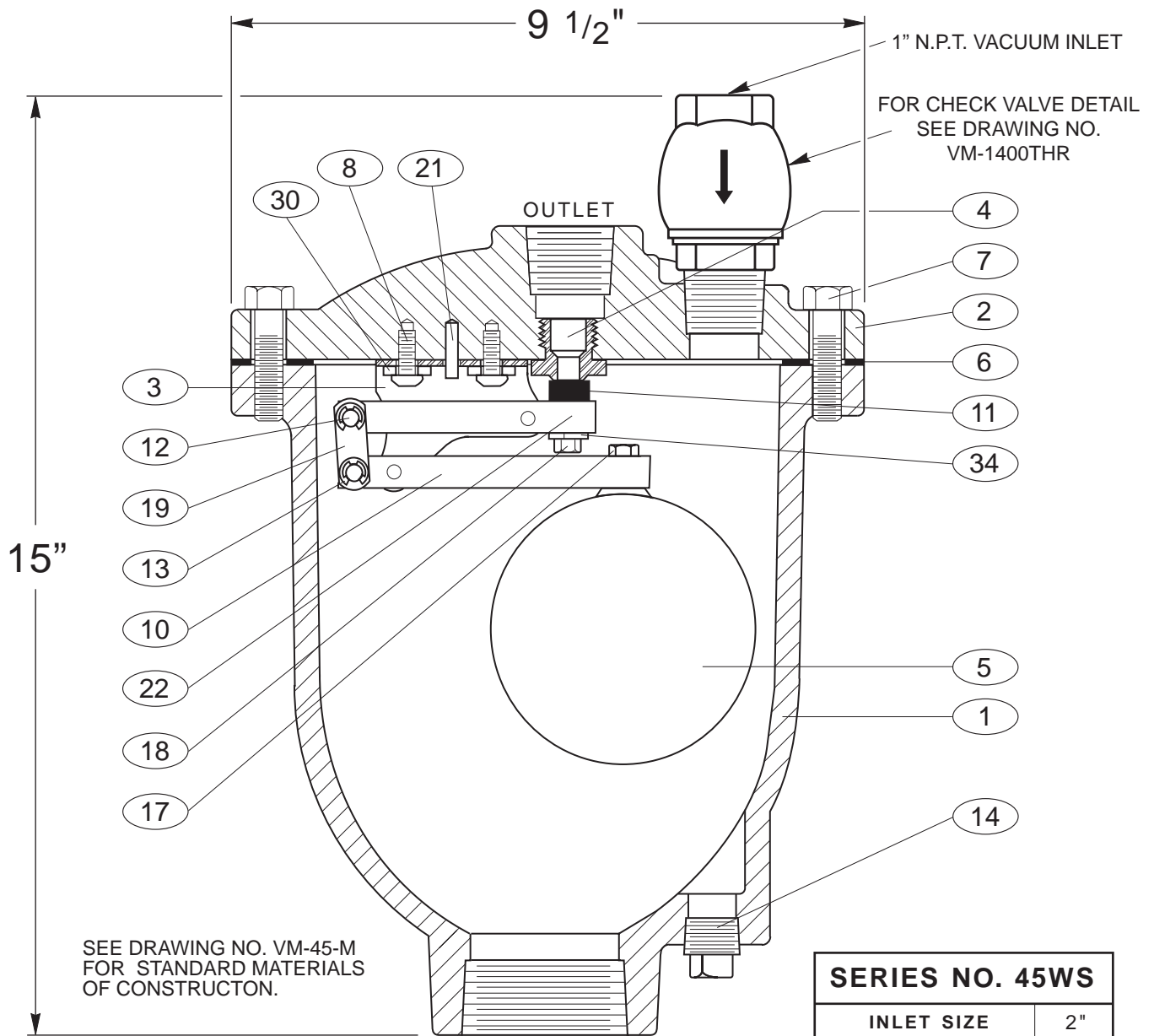
Revised 10-16-03

WELL SERVICE AIR VALVE

DATE 6-15-76

VAL-MATIC[®] VALVE AND MANUFACTURING CORP.

DRWG. NO.
VM-104WS



TEST PRESSURE
1.5 TIMES COLD WORKING PRESSURE-CWP

NOTE:

For use with vertical turbine pumps equipped with power operated check valves and time delay opening.

SERIES NO. 45WS			
INLET SIZE		2"	
OUTLET SIZE		1"	
WORKING PRESSURE	150 P.S.I. C.W.P.	MODEL NO.	45WS
		ORIFICE SIZE	23/64"
	300 P.S.I. C.W.P.	MODEL NO.	45.5WS
		ORIFICE SIZE	7/32"

- | | | |
|---------------|-------------------|-----------------------|
| 1 BODY | 8 RETAINING SCREW | 18 LOCK NUT |
| 2 COVER | 10 FLOAT ARM | 19 LINK |
| 3 LEVER FRAME | 11 ORIFICE BUTTON | 21 LOCATING PIN |
| 4 SEAT | 12 PIVOT PIN | 22 ORIFICE BUTTON ARM |
| 5 FLOAT | 13 RETAINING RING | 28 PIPE PLUG |
| 6 GASKET | 14 PIPE PLUG | 30 WASHER |
| 7 COVER BOLT | 17 FLOAT RETAINER | 34 LOCK WASHER |

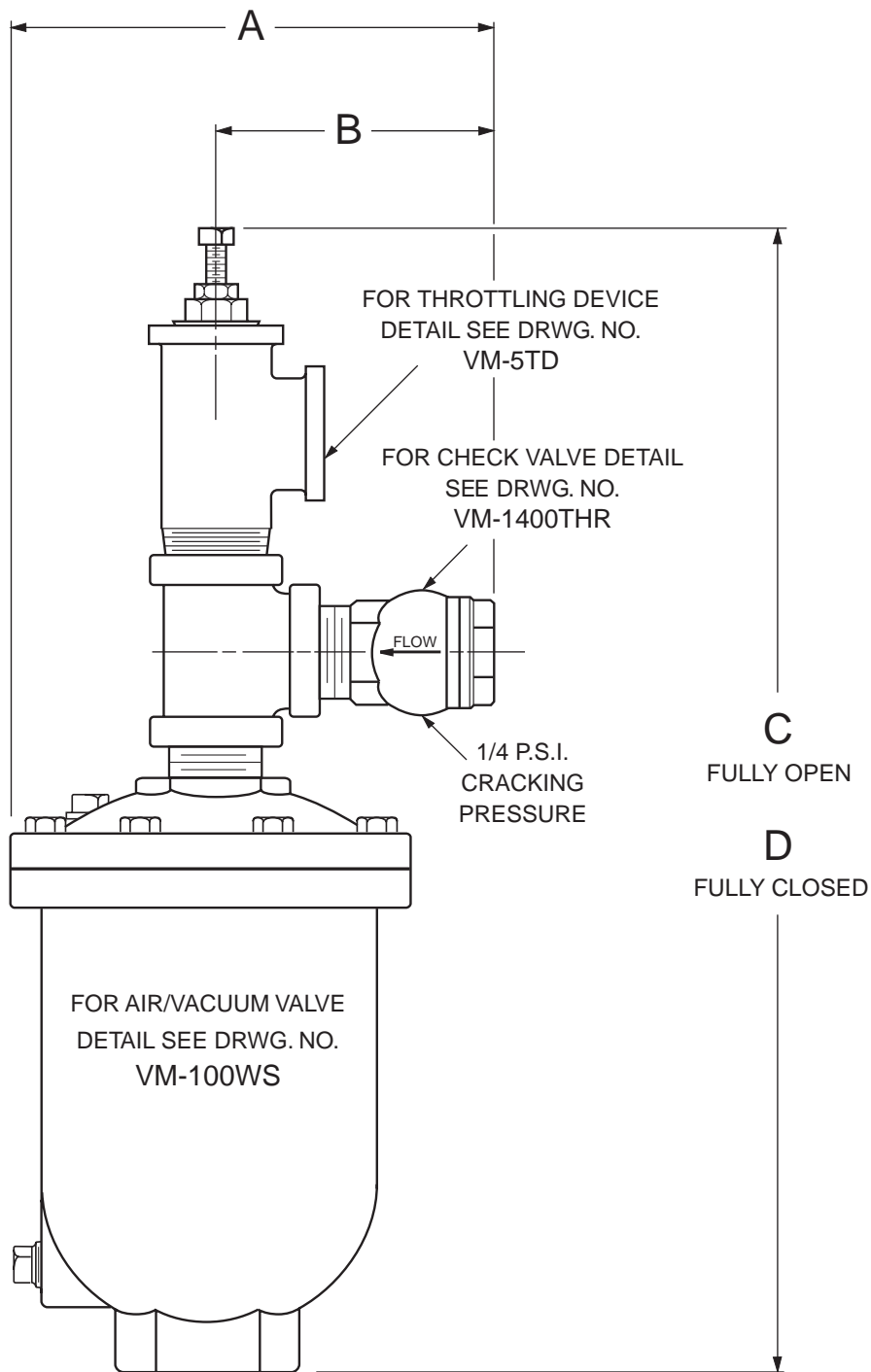
Revised 5-18-98

WELL SERVICE AIR RELEASE VALVE

DATE 11-10-97

VAL-MATIC® VALVE AND MANUFACTURING CORP.

DRWG. NO.
VM-45WS



SIZE	MODEL NUMBER	A	B	C	D
1/2"	100WS/5TDVB	6 3/4"	3 11/16"	14 5/8"	13 3/4"
1"	101WS/1TDVB	8 1/8"	4 5/8"	20 1/8"	18"
2"	102WS/2TDVB	11 3/8"	6 5/8"	26 3/8"	23 3/4"

Revised 5-18-98

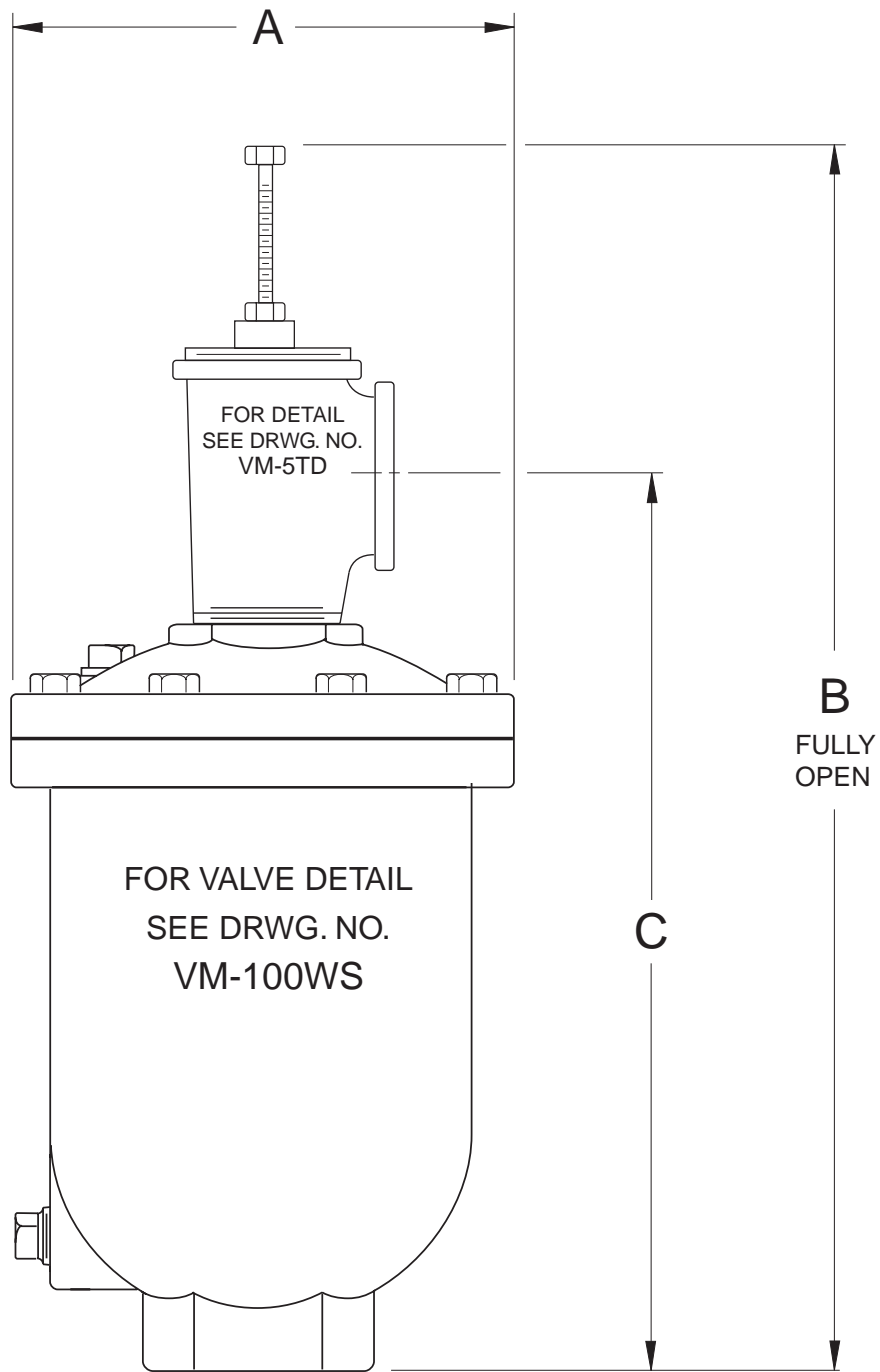
WELL SERVICE AIR/VACUUM VALVE W/ VACUUM BREAKER & THROTTLING DEVICE

DATE 2-18-91

VAL-MATIC[®] VALVE AND MANUFACTURING CORP.

DRWG. NO.

SS-862



Note:
1" - 3" UL LISTED

VALVE SIZE	MODEL NO.	A	B	C
1/2	100WST	6 1/8	11 7/8	8 3/4
1	101WST	7	15	11
2	102WST	9 1/2	20 1/4	14 3/8
3	103WST	9 1/2	24 1/8	15 3/4

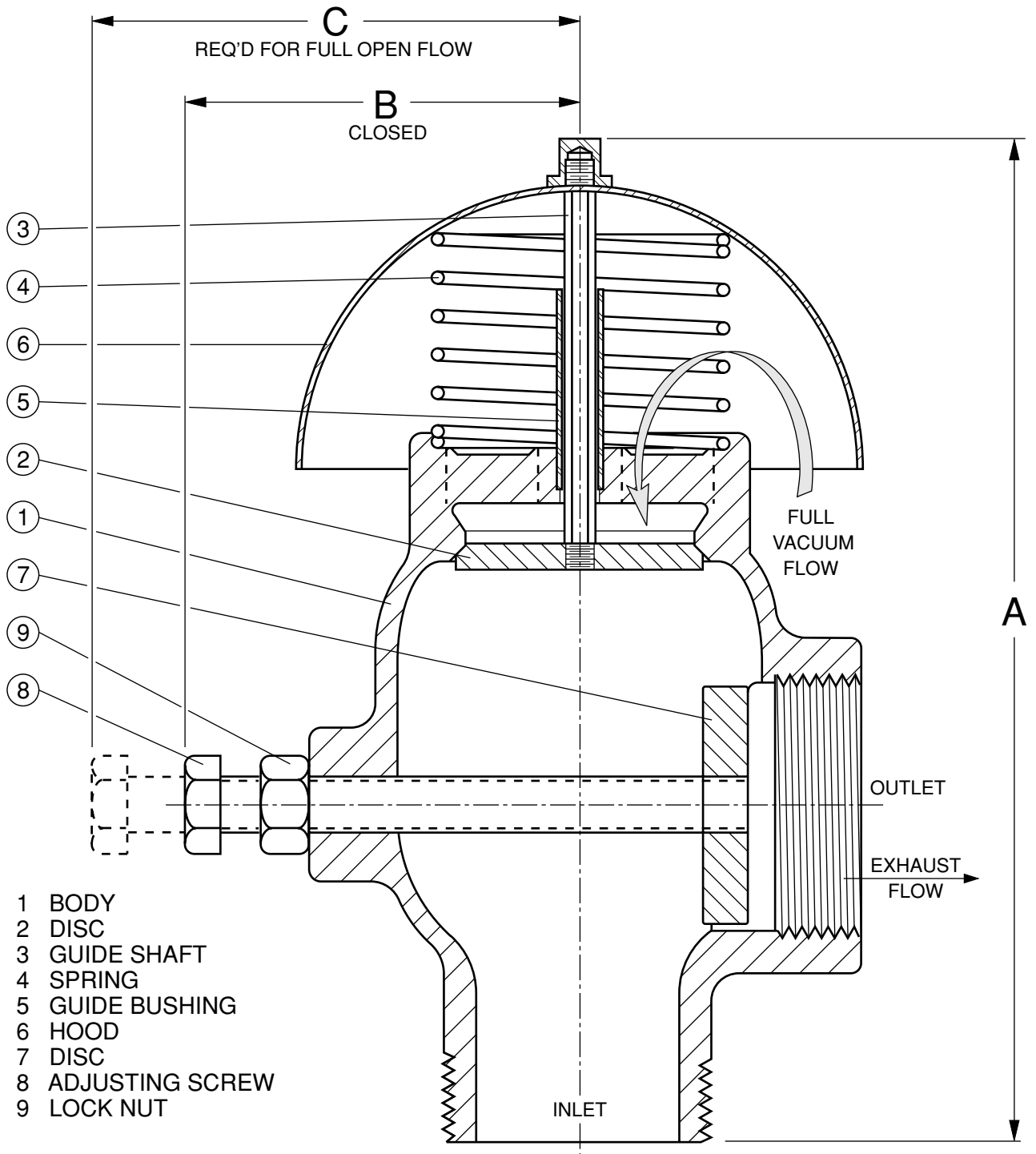
Revised 5-15-98

WELL SERVICE AIR VALVE with THROTTLING DEVICE

DATE 7-14-77

VAL-MATIC[®] VALVE AND MANUFACTURING CORP.

DRWG. NO.
VM-100WST



SEE DRAWING VM-5DPT-M FOR STANDARD MATERIALS OF CONSTRUCTION.

MODEL NO.	INLET/OUTLET NPT SIZE	A	B	C
5DPT	1/2	4 7/16	1 7/16	2
1DPT	1	5 3/4	2 1/8	3
2DPT	2	8 7/8	3 1/8	4 5/16
3DPT	3	12 5/8	4 5/16	6 7/16

Revised 10-7-98

DUAL PORT THROTTLING DEVICE

DATE 3-5-98

VAL-MATIC VALVE AND MANUFACTURING CORP.

DRWG. NO.
VM-5DPT

DUAL PORT THROTTLING DEVICE

SERIES NO. 5DPT

STANDARD MATERIALS OF CONSTRUCTION

<u>PART NO.</u>	<u>PART NAME</u>	<u>MATERIAL</u>
1	BODY	CAST IRON
2	DISC	STAINLESS STEEL T304
3	GUIDE SHAFT	CARBON STEEL
4	SPRING	STAINLESS STEEL
5	GUIDE BUSHING	STAINLESS STEEL T304
6	HOOD	STAINLESS STEEL T304
7	DISC	CARBON STEEL
8	ADJUSTING SCREW	CARBON STEEL
9	LOCK NUT	PLATED CARBON STEEL

NOTE: ALL SPECIFICATIONS AS
LAST REVISED.

Revised 9-4-02

MATERIALS OF CONSTRUCTION

DATE 8/4/98

VAL-MATIC[®] VALVE AND MANUFACTURING CORP.

DRWG. NO.

VM-5DPT-M