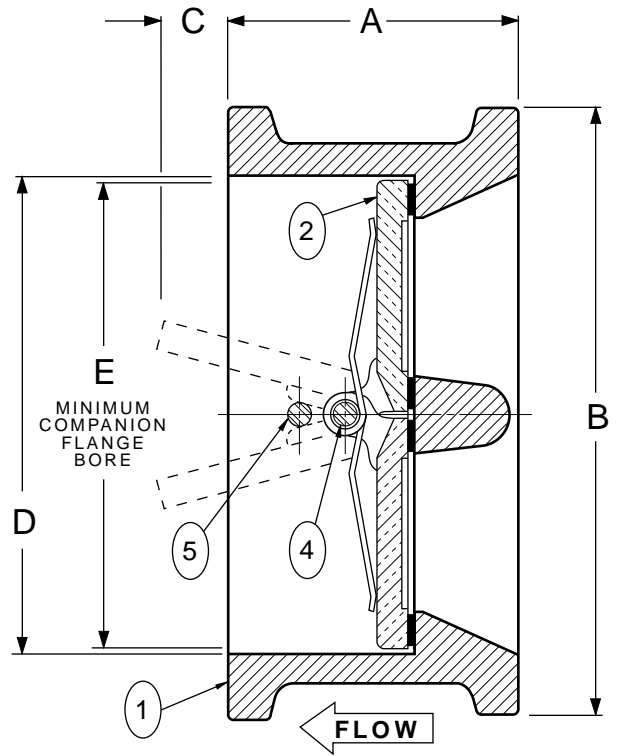
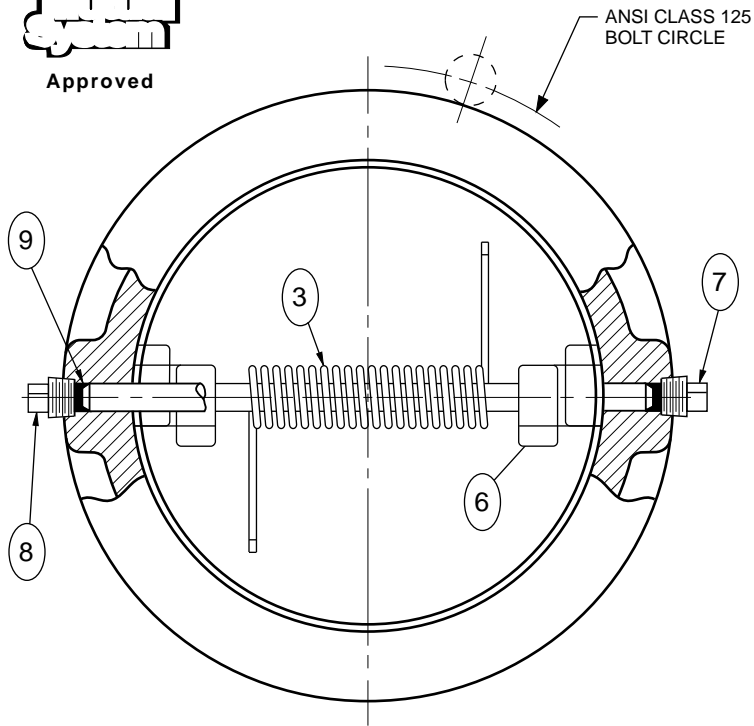




Approved



PART NO.	PART NAME
1	BODY
2	DISC
3	TORSION SPRING
4	DISC HINGE PIN
5	DISC STOP PIN

PART NO.	PART NAME
6	DISC THRUST BEARING
7	HINGE PIN RETAINER
8	STOP PIN RETAINER
9	STABILIZATION SPHERE

ANSI CLASS 125						
VALVE SIZE	MODEL NO.	A	B	C	D	E
2	8802.3	2 1/8	4 1/8	3/16	2 9/16	1 15/16
2 1/2	8825.3	2 3/8	4 7/8	5/16	3 1/16	2 5/16
3	8803.3	2 5/8	5 3/8	1/2	3 11/16	2 7/8
4	8804.3	2 5/8	6 7/8	1	4 5/8	3 7/8
5	8805.3	3 1/4	7 3/4	1 1/8	5 11/16	4 13/16
6	8806.3	3 3/4	8 3/4	1 1/4	6 3/4	5 3/4
8	8808.3	5	11	1 5/16	8 3/4	7 5/8
10	8810.3	5 1/2	13 3/8	2 1/2	10 7/8	9 9/16
12	8812.3	7 1/8	16 1/8	2 3/8	12 7/8	11 3/8

ANSI PRESSURE-TEMPERATURE RATING	
TEMP. ° F.	MAXIMUM NON-SHOCK PRESSURE PSI
	CLASS 125 CAST IRON
150°	200
200°	190
250°	175
HYDROSTATIC TEST PRESSURE	300

VAL-MATIC® DUAL DISC® CHECK VALVES CAN BE USED FOR HORIZONTAL FLOW OR VERTICAL FLOW-UP APPLICATIONS ONLY. CAUTION: FOR HORIZONTAL FLOW APPLICATIONS, VALVE MUST BE INSTALLED WITH THE DISC HINGE PIN IN THE VERTICAL POSITION. SEE DRAWING NO. VM-8802-M FOR 2"-12" STANDARD MATERIAL OF CONSTRUCTION. FOR 14" & LARGER VALVES, SEE DRAWING NOS. VM-8814 & VM-8836. FOR AIR SERVICE APPLICATIONS, SEE DRAWING NO. VM-8902. VAL-MATIC® DUAL DISC® CHECK VALVES CONFORM TO ANSI B16.1 SPECIFICATIONS.

Revised 1-27-03

ANSI CLASS 125 DUAL DISC® CHECK VALVE

DATE 3-26-98



VALVE AND MANUFACTURING CORP.

DRWG. NO.

VM-8802

DUAL DISC[®] CHECK VALVE

2"-12" STANDARD MATERIALS OF CONSTRUCTION

<u>PART NO.</u>	<u>PART NAME</u>	<u>MATERIAL</u>
1	BODY	DUCTILE IRON ASTM A536, GRADE 65-45-12 W/ BUNA-N RESILENT SEAT MOLDED TO BODY
2	DISC	BRONZE ASTM B584, ALLOY C83600
3	TORSION SPRING	STAINLESS STEEL T316, ASTM A313
4	HINGE PIN	STAINLESS STEEL T316, ASTM A276
5	STOP PIN	STAINLESS STEEL T316, ASTM A276
6	THRUST BEARING	STAINLESS STEEL T316, ASTM A240
7	HINGE PIN RETAINER	STEEL
8	STOP PIN RETAINER	STEEL
9	STABILIZATION SPHERE	BUNA-N
10	SPACER	NYLON 6

NOTE: ALL SPECIFICATIONS AS
LAST REVISED.

Revised 4-5-01

MATERIALS OF CONSTRUCTION

DATE 6/4/98

VAL-MATIC[®]

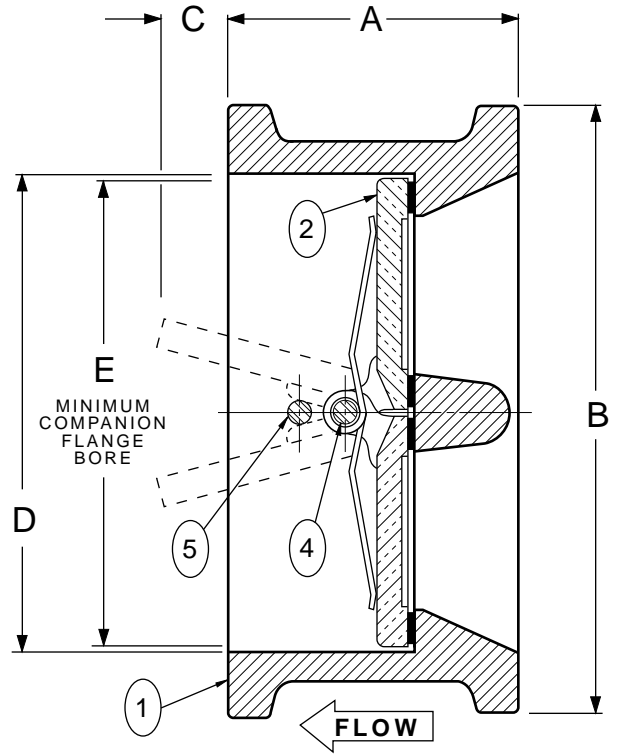
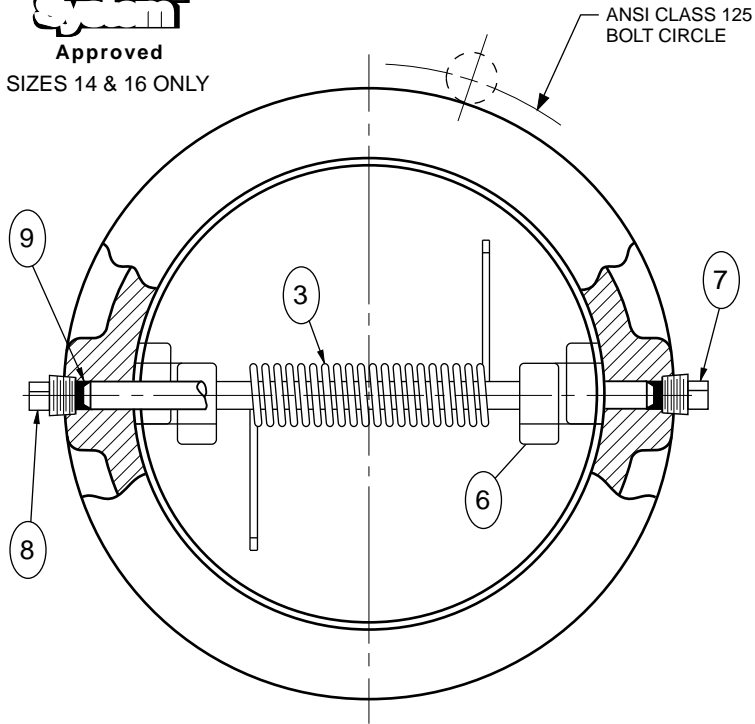
VALVE AND MANUFACTURING CORP.

DRWG. NO.

VM-8802-M



Approved
SIZES 14 & 16 ONLY



PART NO.	PART NAME
1	BODY
2	DISC
3	TORSION SPRING
4	DISC HINGE PIN
5	DISC STOP PIN

PART NO.	PART NAME
6	DISC THRUST BEARING
7	HINGE PIN RETAINER
8	STOP PIN RETAINER
9	STABILIZATION SPHERE

ANSI CLASS 125						
VALVE SIZE	MODEL NO.	A	B	C	D	E
14	8814	7 1/4	17 3/4	3 1/4	14 3/8	12 1/2
16	8816	7 1/2	20 1/4	4 1/2	16 3/8	15
18	8818	8	21 5/8	5 3/8	18 3/8	17
20	8820	8 3/8	23 7/8	6 3/8	20 1/4	19
24	8824	8 3/4	28 1/4	8 1/2	24 1/4	23
30	8830	12	34 3/4	9 1/2	30	28 1/2

ANSI PRESSURE-TEMPERATURE RATING	
TEMP. ° F.	MAXIMUM NON-SHOCK PRESSURE PSI
150°	150
200°	135
250°	125
HYDROSTATIC TEST PRESSURE	225

VAL-MATIC® DUAL DISC® CHECK VALVES CAN BE USED FOR HORIZONTAL FLOW OR VERTICAL FLOW-UP APPLICATIONS ONLY.
CAUTION: FOR HORIZONTAL FLOW APPLICATIONS, VALVE MUST BE INSTALLED WITH THE DISC HINGE PIN IN THE VERTICAL POSITION.
SEE DRAWING NO. VM-8814-M FOR STANDARD MATERIALS OF CONSTRUCTION.
FOR 36" & LARGER VALVES, SEE DRAWING NO. VM-8836.
FOR AIR SERVICE APPLICATIONS, SEE DRAWING NO. VM-8914.

Revised 1-27-03

ANSI CLASS 125 WAFER STYLE DUAL DISC® CHECK VALVE

DATE 1-15-03



VALVE AND MANUFACTURING CORP.

DRWG. NO.

VM-8814

DUAL DISC[®] CHECK VALVE

14"-30" STANDARD MATERIALS OF CONSTRUCTION

<u>PART NO.</u>	<u>PART NAME</u>	<u>MATERIAL</u>
1	BODY	CAST IRON ASTM A126, CLASS B W/ BUNA-N RESILENT SEAT MOLDED TO BODY
2	DISC	ALUMINUM BRONZE ASTM B148, ALLOY 95200
3	TORSION SPRING	STAINLESS STEEL T316, ASTM A313 (14"-16") STAINLESS STEEL 17-7PH, ASTM A313 (18"-30")
4	HINGE PIN	STAINLESS STEEL T316, ASTM A276
5	STOP PIN	STAINLESS STEEL T316, ASTM A276
6	THRUST BEARING	STAINLESS STEEL T316, ASTM A240
7	HINGE PIN RETAINER	STEEL
8	STOP PIN RETAINER	STEEL
9	STABILIZATION SPHERE	BUNA-N

NOTE: ALL SPECIFICATIONS AS
LAST REVISED.

Revised 1-27-03

MATERIALS OF CONSTRUCTION

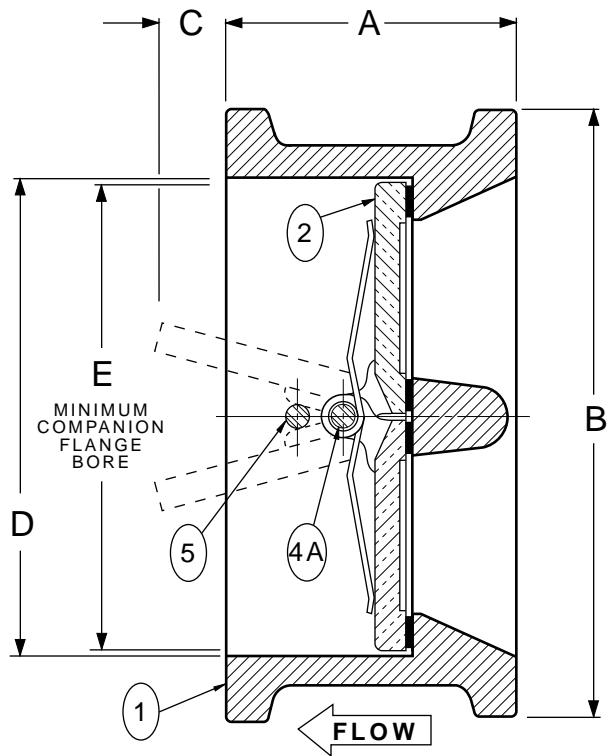
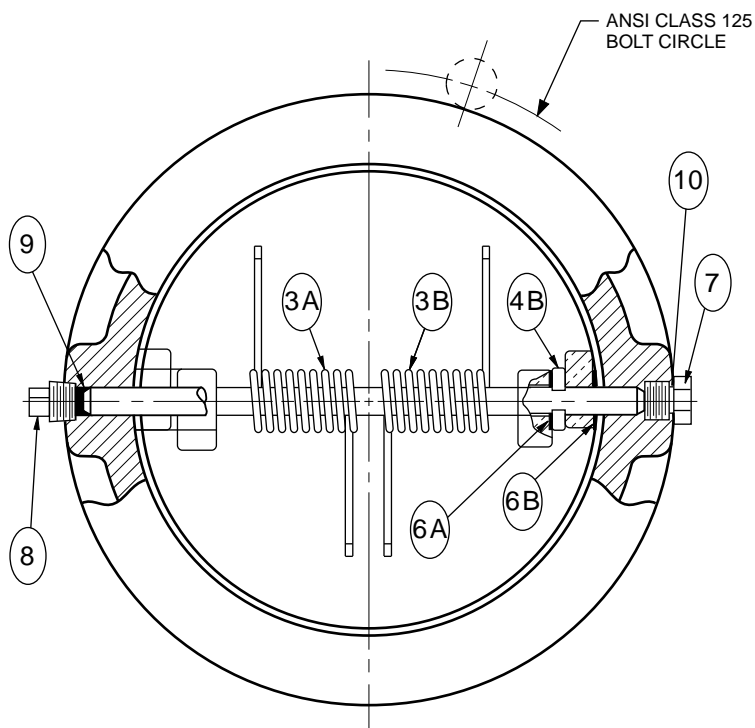
DATE 6/21/93

VAL-MATIC[®]

VALVE AND MANUFACTURING CORP.

DRWG. NO.

VM-8814-M



PART NO.	PART NAME
1	BODY
2	DISC
3A	TORSION SPRING (RH)
3B	TORSION SPRING (LH)
4A	HINGE PIN
4B	SHAFT COLLAR
5	STOP PIN

PART NO.	PART NAME
6A	INNER THRUST BEARING
6B	OUTER THRUST BEARING
7	HINGE PIN RETAINER
8	STOP PIN RETAINER
9	STABILIZATION SPHERE
10	O-RING

ANSI CLASS 125						
VALVE SIZE	MODEL NO.	A	B	C	D	E
36	8836	14 1/2	41 1/4	12	36	34 1/2
42	8842	17	48	13 3/4	42	40 1/2
48	8848	20 5/8	54 1/2	17	48	46 1/2
54	8854	21 1/4	60 1/2	18 1/4	54	49 1/4

ANSI PRESSURE-TEMPERATURE RATING	
TEMP. ° F.	MAXIMUM NON-SHOCK PRESSURE PSI
	CLASS 125 CAST IRON
150°	150
200°	135
250°	125
HYDROSTATIC TEST PRESSURE	225

VAL-MATIC® DUAL DISC® CHECK VALVES CAN BE USED FOR HORIZONTAL FLOW OR VERTICAL FLOW-UP APPLICATIONS ONLY. CAUTION: FOR HORIZONTAL FLOW APPLICATIONS, VALVE MUST BE INSTALLED WITH THE DISC HINGE PIN IN THE VERTICAL POSITION. SEE DRAWING NO. VM-8836-M FOR STANDARD MATERIALS OF CONSTRUCTION. FOR AIR SERVICE APPLICATIONS, SEE DRAWING NO. VM-8914.

ANSI CLASS 125 WAFER STYLE DUAL DISC® CHECK VALVE

DATE 1-15-03

VAL-MATIC®

VALVE AND MANUFACTURING CORP.

DRWG. NO.

VM-8836

DUAL DISC[®] CHECK VALVE

36"-54" STANDARD MATERIALS OF CONSTRUCTION

<u>PART NO.</u>	<u>PART NAME</u>	<u>MATERIAL</u>
1	BODY	CAST IRON ASTM A126, CLASS B W/ BUNA-N RESILENT SEAT MOLDED TO BODY
2	DISC	ALUMINUM BRONZE ASTM B148, ALLOY 95200
3A	TORSION SPRING (RH)	STAINLESS STEEL 17-7 PH ASTM A313
3B	TORSION SPRING (LH)	STAINLESS STEEL 17-7 PH ASTM A313
4A	HINGE PIN	STAINLESS STEEL T316, ASTM A276
4B	SHAFT COLLAR	STAINLESS STEEL T316, ASTM A240
5	STOP PIN	STAINLESS STEEL T316, ASTM A240
6A	INNER THRUST BEARING	STAINLESS STEEL T316, ASTM A240
6B	OUTER THRUST BEARING	STAINLESS STEEL T316, ASTM A240
7	HINGE PIN RETAINER	STEEL
8	STOP PIN RETAINER	STEEL
9	STABILIZATION SPHERE	BUNA-N
10	O-RING	BUNA-N

NOTE: ALL SPECIFICATIONS AS
LAST REVISED.

MATERIALS OF CONSTRUCTION

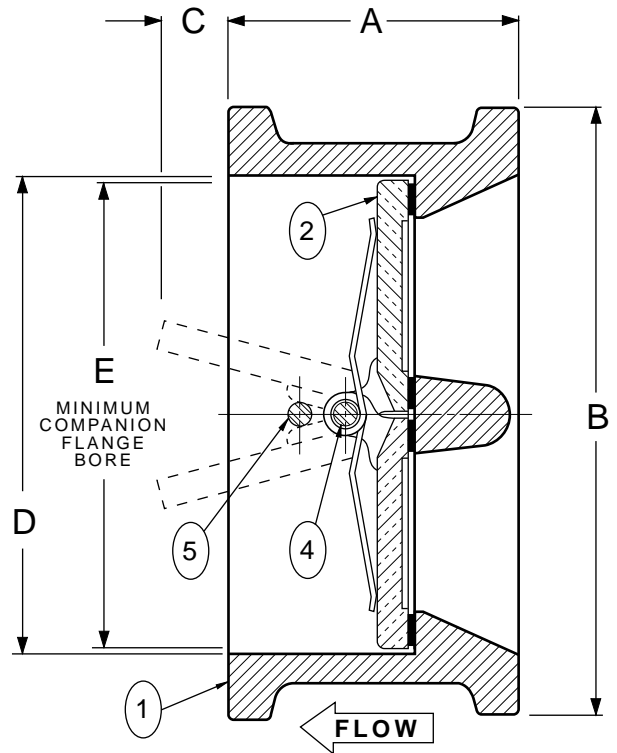
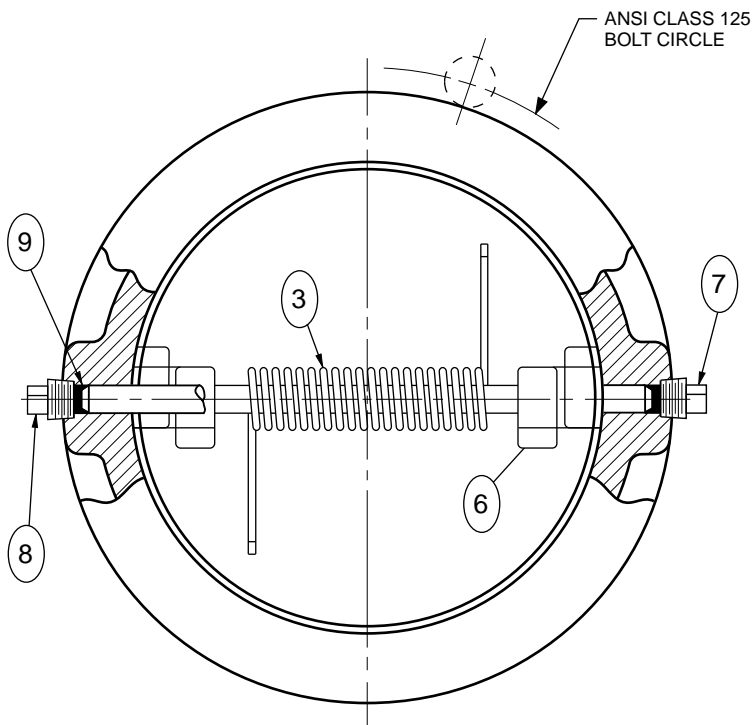
DATE 1/15/03

VAL-MATIC[®]

VALVE AND MANUFACTURING CORP.

DRWG. NO.

VM-8836-M



PART NO.	PART NAME
1	BODY
2	DISC
3	TORSION SPRING
4	DISC HINGE PIN
5	DISC STOP PIN

PART NO.	PART NAME
6	DISC THRUST BEARING
7	HINGE PIN RETAINER
8	STOP PIN RETAINER
9	STABILIZATION SPHERE

ANSI CLASS 125						
VALVE SIZE	MODEL NO.	A	B	C	D	E
2	8902.3	2 1/8	4 1/8	3/16	2 9/16	1 15/16
2 1/2	8925.3	2 3/8	4 7/8	5/16	3 1/16	2 5/16
3	8903.3	2 5/8	5 3/8	1/2	3 11/16	2 7/8
4	8904.3	2 5/8	6 7/8	1	4 5/8	3 7/8
5	8905.3	3 1/4	7 3/4	1 1/8	5 11/16	4 13/16
6	8906.3	3 3/4	8 3/4	1 1/4	6 3/4	5 3/4
8	8908.3	5	11	1 5/16	8 3/4	7 5/8
10	8910.3	5 1/2	13 3/8	2 1/2	10 7/8	9 9/16
12	8912.3	7 1/8	16 1/8	2 3/8	12 7/8	11 3/8

ANSI PRESSURE-TEMPERATURE RATING	
TEMP. ° F.	MAXIMUM NON-SHOCK PRESSURE PSI
	CLASS 125 CAST IRON
150°	200
200°	190
250°	175
HYDROSTATIC TEST PRESSURE	300

VAL-MATIC® DUAL DISC® CHECK VALVES CAN BE USED FOR HORIZONTAL FLOW OR VERTICAL FLOW-UP APPLICATIONS ONLY.

CAUTION: FOR HORIZONTAL FLOW APPLICATIONS, VALVE MUST BE INSTALLED WITH THE DISC HINGE PIN IN THE VERTICAL POSITION.

SEE DRAWING NO. VM-8802-M FOR 2"-12" STANDARD MATERIALS OF CONSTRUCTION.

FOR 14" & LARGER VALVES, SEE DRAWING NO. VM-8914.

VAL-MATIC® DUAL DISC® CHECK VALVES CONFORM TO ANSI B16.1 SPECIFICATIONS.

Revised 1-27-03

ANSI CLASS 125 AIR SERVICE DUAL DISC® CHECK VALVE

DATE 3-27-98

VAL-MATIC®

VALVE AND MANUFACTURING CORP.

DRWG. NO.

VM-8902