

VAL-MATIC®

AIR and VACUUM VALVES

FOR HIGH CAPACITY
VENTING & PIPELINE
PROTECTION

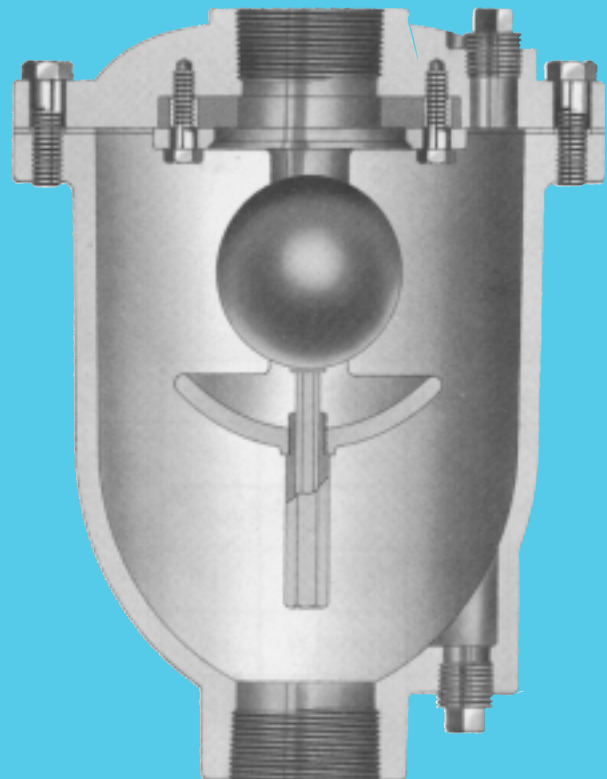


Exclusive
**STAINLESS STEEL
TRIM - STANDARD**

- ALL S.S. TRIM ELIMINATES DESTRUCTIVE ELECTROLYTIC ACTION WHICH CAN OCCUR WHEN DISSIMILAR METALS SUCH AS S.S. & BRONZE ARE USED TOGETHER

Other Features

- FULL PORTED VALVES—NO RESTRICTIVE AREAS
- STAINLESS STEEL TRIM ASSURES LOW MAINTENANCE
- STAINLESS STEEL FLOATS UNCONDITIONALLY GUARANTEED
- COMPLETE INTERCHANGEABILITY OF ALL PARTS
- RUGGED CAST IRON BODY AND COVER
- SYNTHETIC SEATING ASSURES DROP TIGHT SEAL AT VERY LOW PRESSURES
- EASILY MAINTAINED WITHOUT SPECIAL TOOLS



VAL-MATIC®

VAL-MATIC® VALVE AND MANUFACTURING CORP.

905 RIVERSIDE DRIVE ■ ELMHURST, IL 60126
PHONE (630)941-7600 ■ FAX (630)941-8042

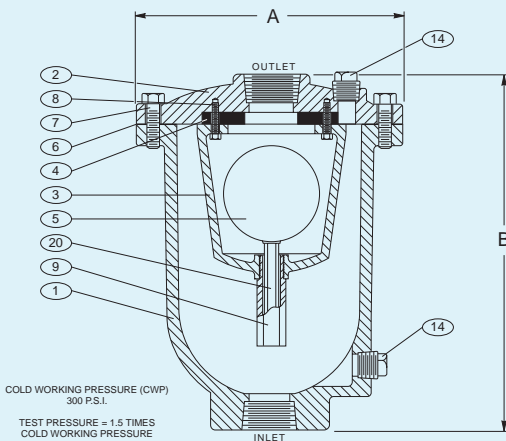
These valves perform two important functions when mounted at high points on pipe lines.

First of all, they allow large quantities of air within the line to be exhausted as that line is being filled. When the air has been vented and the fluid level reaches the valve, the float rises and seals tightly against a synthetic seat.

Secondly, in the event of the line being drained, either inten-

tionally or through a fracture in the system, the valve responds to the loss of pressure and opens. This allows air to re-enter the pipeline and prevents a potentially damaging vacuum from developing.

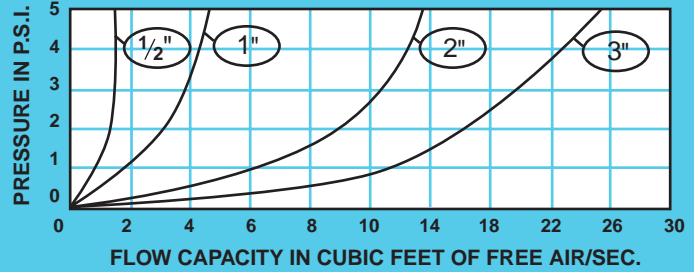
NOTE: These valves, by their nature, do not open under pressure to exhaust small quantities of air which may collect at high points while the system is in operation. Air release valves are required for this function. (See Bulletin No. 15).



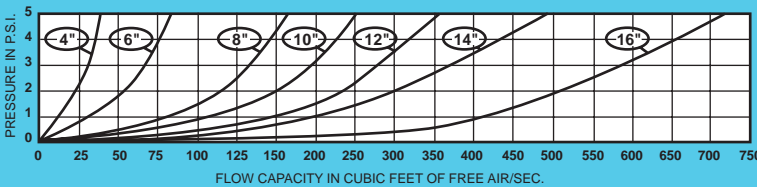
THREADED INLET

MODEL NO.	HEIGHT	WIDTH	INLET SIZE	OUTLET SIZE	MAX. W.P.	WT. LBS..
100	7"	6 1/8"	1/2" NPT	1/2" NPT	150 PSI	26
					300 PSI	
101	9 1/2"	7"	1" NPT	1" NPT	150 PSI	26
					300 PSI	
102	12"	9 1/2"	2" NPT	2" NPT	150 PSI	48
					300 PSI	
103	12"	9 1/2"	3" NPT	3" NPT	150 PSI	50
					300 PSI	

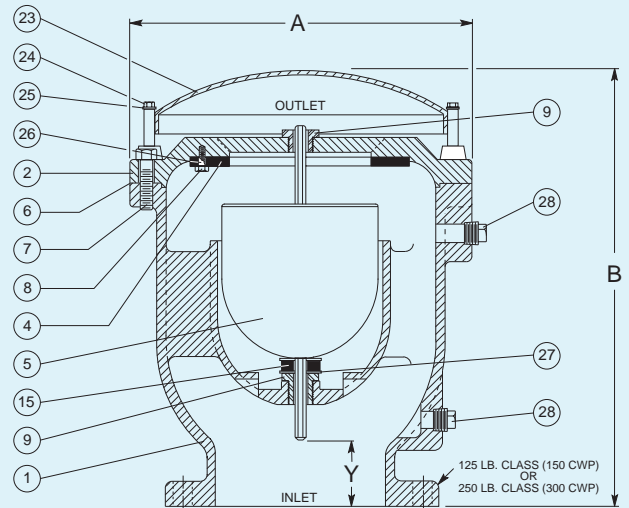
NOTE: Valve for 150 PSI max. operating pressure will be furnished unless otherwise specified.



MODEL NO.	HEIGHT	WIDTH	*INLET SIZE	OUTLET SIZE	*MAX. W.P.	WT. LBS.
104	17"	12"	4" FLG.	4"	150 PSI	105
					300 PSI	
106	20"	14"	6" FLG.	6"	150 PSI	160
					300 PSI	
108	23"	18"	8" FLG.	8"	150 PSI	208
					300 PSI	
110	26"	20"	10" FLG.	10"	150 PSI	370
					300 PSI	
112	31"	24"	12" FLG.	12"	150 PSI	590
					300 PSI	
114	34"	27"	14" FLG.	14"	150 PSI	681
					300 PSI	
116	34"	30 1/2"	16" FLG.	16"	150 PSI	879
					300 PSI	



Available in flanged inlet ANSI Class 125 for 150 P.S.I. & ANSI Class 250 for 300 P.S.I. W.P. Higher working pressures available upon request.



FLANGED INLET