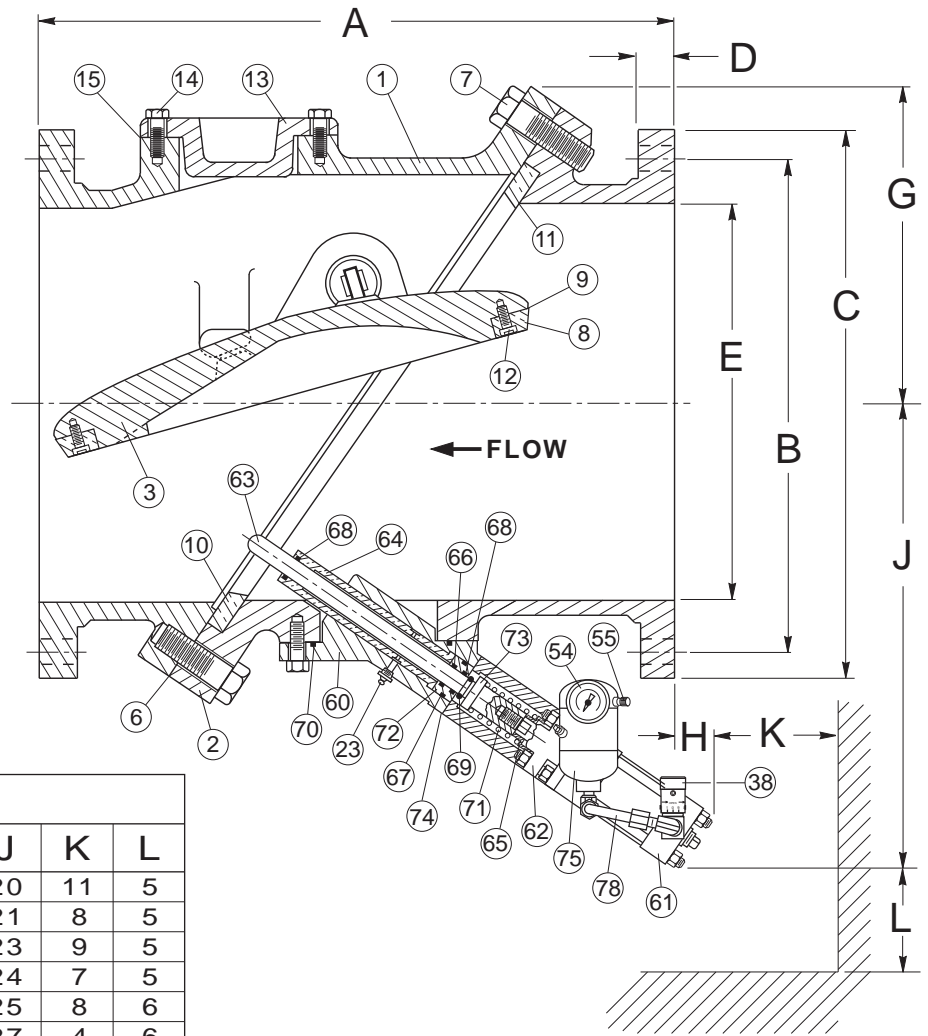


SEE DRAWING NO. VM-9812B-M FOR ANSI CLASS 125 MATERIALS OF CONSTRUCTION.

ANSI CLASS 125

VALVE SIZE	MODEL NO.	A	B	C	D	E	F	G	BOLT SIZE	NO. OF BOLTS	H	J	K	L
12	9812B	24	17	19	1 1/4	12	26	11	7/8	12	7	20	11	5
14	9814B	30	18 3/4	21	1 3/8	14	29	12	1	12	4	21	8	5
16	9816B	30	21 1/4	23 1/2	1 7/16	16	32	14	1	16	5	23	9	5
18	9818B	33	22 3/4	25	1 9/16	18	36	15	1 1/8	16	3	24	7	5
20	9820B	32	25	27 1/2	1 11/16	20	39	16	1 1/8	20	3	25	8	6
24	9824B	38	29 1/2	32	1 7/8	24	46	19	1 1/4	20	1	27	4	6
30	9830B	52	36	38 3/4	2 1/8	30	55	23	1 1/4	28	1	35	6	8
36	9836B	59 1/2	42 3/4	46	2 3/8	36	65	27	1 1/2	32	5	39	2	8
42	9842B	62 1/2	49 1/2	53	2 5/8	42	73	32	1 1/2	36	5	43	5	8
48	9848B	65	56	59 1/2	2 3/4	48	82	37	1 1/2	44	2	52	8	8
54	9854B	78	62 3/4	66 1/4	3	54	89	39	1 3/4	44	7	55	5	8
60	9860B	87	69 1/4	73	3 1/8	60	99	42	1 3/4	52	7	64	5	8



NOTE

DIMENSIONS "K" AND "L" REPRESENT THE MINIMUM CLEARANCE REQUIRED TO REMOVE DASHPOT UNIT. HOWEVER DIMENSION "L" CAN BE REDUCED TO 1" IF SPACE REQUIREMENTS DICTATE.

Revised 3-19-10

ANSI CLASS 125 TILTED DISC® CHECK VALVE WITH BOTTOM MOUNTED OIL DASHPOT

DATE 8-12-80



VALVE AND MANUFACTURING CORP.

DRWG. NO.

VM-9812B