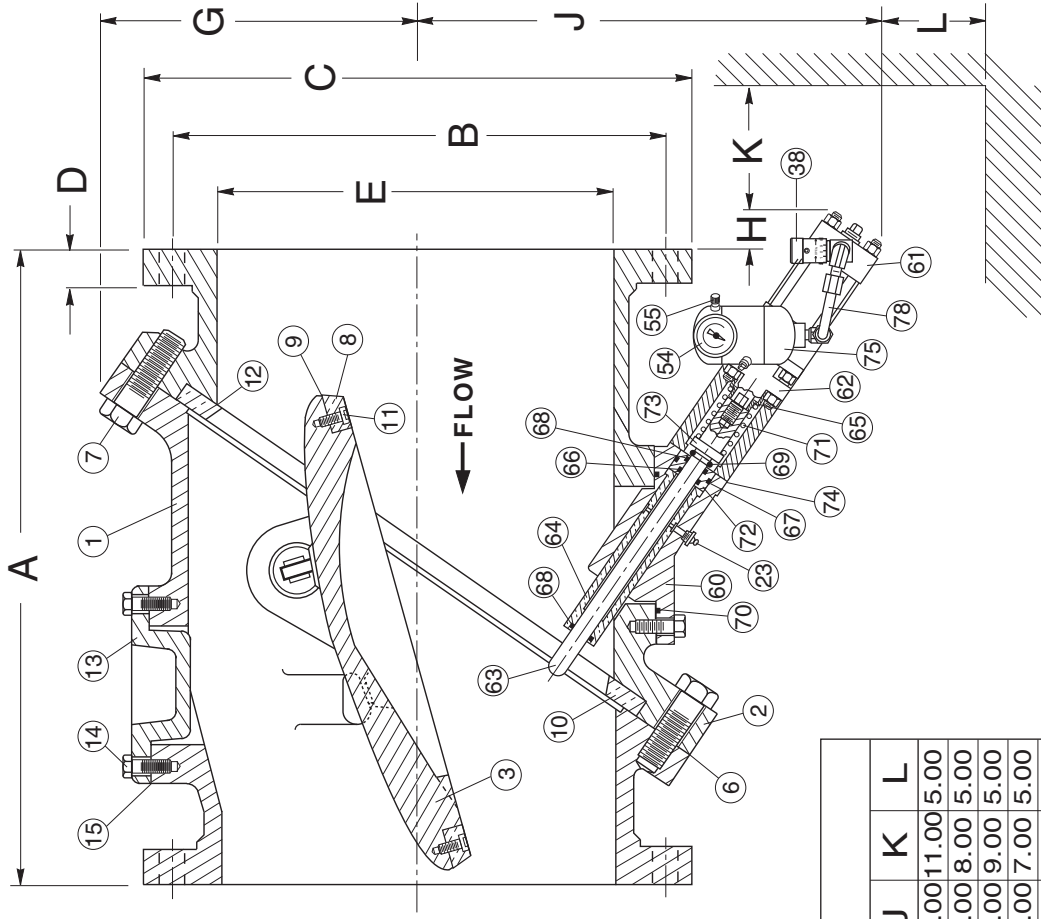


DISC POSITION INDICATOR

SEE DRAWING NO. VM-9612B-M FOR ANSI CLASS 150 MATERIALS OF CONSTRUCTION.

| ANSI CLASS 150 | | | | | | | | | | | | | | |
|----------------|-----------|-------|-------|-------|------|-------|-------|-------|-----------|--------------|------|-------|-------|------|
| VALVE SIZE | MODEL NO. | A | B | C | D | E | F | G | BOLT SIZE | NO. OF BOLTS | H | J | K | L |
| 12 | 9612B | 24.00 | 17.00 | 19.00 | 1.25 | 12.00 | 26.00 | 11.00 | 7/8 | 12 | 7.00 | 20.00 | 11.00 | 5.00 |
| 14 | 9614B | 30.00 | 18.75 | 21.00 | 1.38 | 14.00 | 29.00 | 12.00 | 1 | 12 | 4.00 | 21.00 | 8.00 | 5.00 |
| 16 | 9616B | 30.00 | 21.25 | 23.50 | 1.44 | 16.00 | 32.00 | 14.00 | 1 | 16 | 5.00 | 23.00 | 9.00 | 5.00 |
| 18 | 9618B | 33.00 | 22.75 | 25.00 | 1.56 | 18.00 | 36.00 | 15.00 | 1 1/8 | 16 | 3.00 | 24.00 | 7.00 | 5.00 |
| 20 | 9620B | 32.00 | 25.00 | 27.50 | 1.69 | 20.00 | 39.00 | 16.00 | 1 1/8 | 20 | 3.00 | 25.00 | 8.00 | 6.00 |
| 24 | 9624B | 38.00 | 29.50 | 32.00 | 1.88 | 24.00 | 46.00 | 19.00 | 1 1/4 | 20 | 1.00 | 27.00 | 4.00 | 6.00 |
| 30 | 9630B | 52.00 | 36.00 | 38.75 | 2.13 | 30.00 | 55.00 | 23.00 | 1 1/4 | 28 | 1.00 | 35.00 | 6.00 | 8.00 |
| 36 | 9636B | 59.50 | 42.75 | 46.00 | 2.38 | 36.00 | 65.00 | 27.00 | 1 1/2 | 32 | 5.00 | 39.00 | 2.00 | 8.00 |
| 42 | 9642B | 62.50 | 49.50 | 53.00 | 2.63 | 42.00 | 73.00 | 32.00 | 1 1/2 | 36 | 5.00 | 43.00 | 5.00 | 8.00 |
| 48 | 9648B | 65.00 | 56.00 | 59.50 | 2.75 | 48.00 | 82.00 | 37.00 | 1 1/2 | 44 | 2.00 | 52.00 | 8.00 | 8.00 |



NOTES:

DIMENSIONS "K" AND "L" REPRESENT THE MINIMUM CLEARANCE REQUIRED TO REMOVE DASHPOT UNIT. HOWEVER DIMENSION "L" CAN BE REDUCED TO 1" IF SPACE REQUIREMENTS DICTATE. FOR VERTICAL FLOW UP INSTALLATION, CONSULT FACTORY.

Revised 8-4-16

DATE 11-9-89

DRWG. NO.

VM-9612B

ANSI CLASS 150 TILTED DISC® CHECK VALVE WITH BOTTOM MOUNTED OIL DASHPOT

VALMATIC® VALVE AND MANUFACTURING CORP.