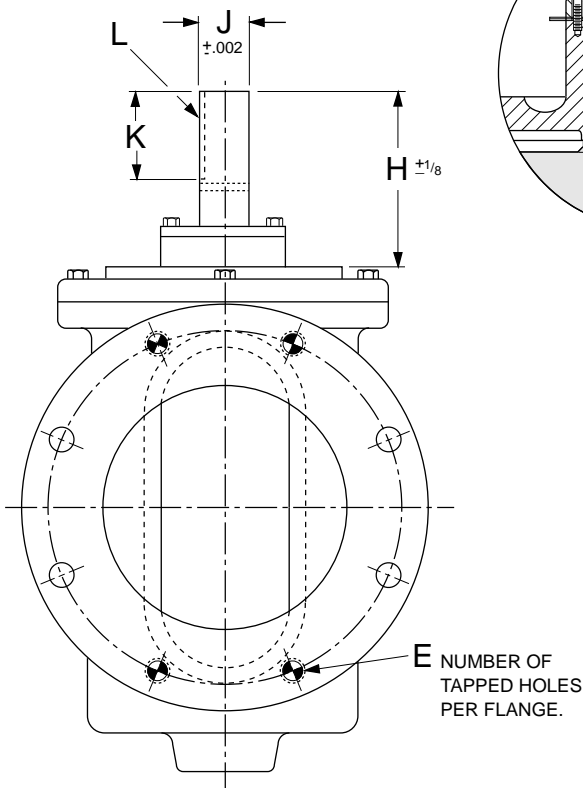
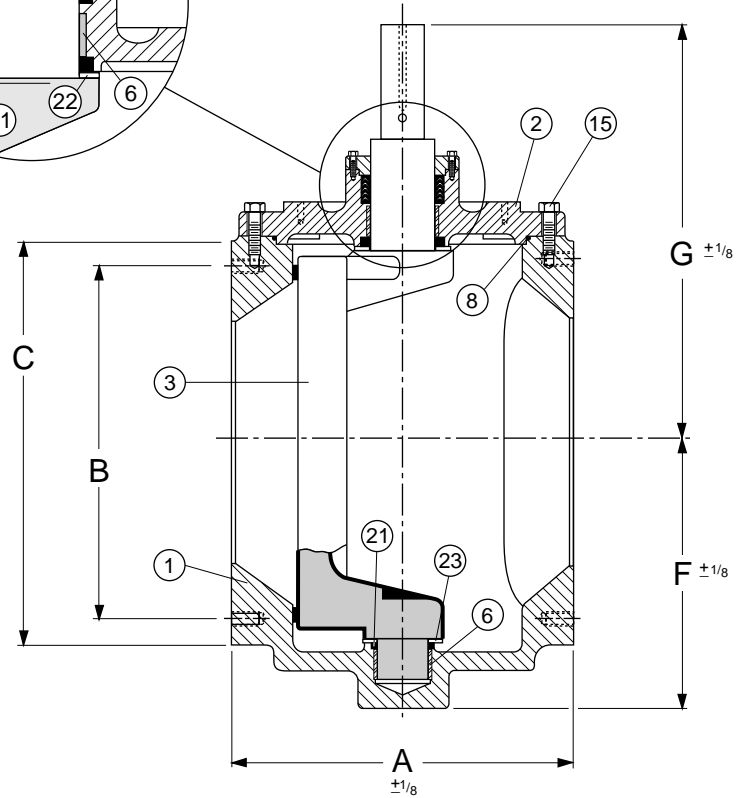
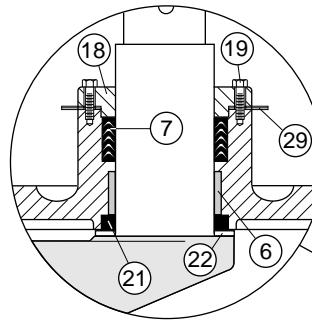
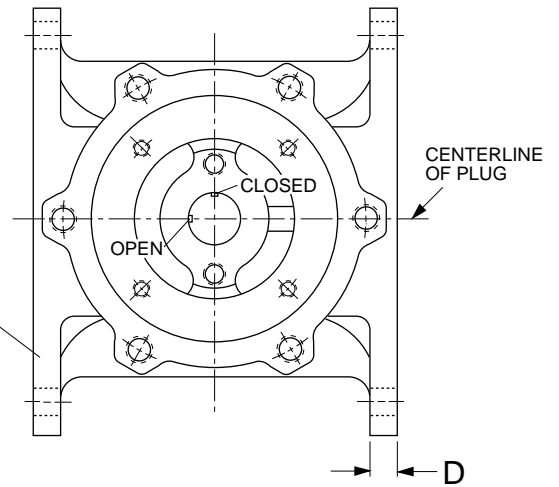


ACTUATOR MOUNTING DIMENSIONS



COLD WORKING PRESSURE
175 P.S.I.
HYDRO TEST PRESSURE
265 P.S.I.



SEE DRAWING NO. VM-5804RN-M FOR STANDARD MATERIAL OF CONSTRUCTION.

END FLANGE DRILLING CONFORMS TO ANSI B16.1

VALVE SIZE	A	B	C	D	E Qty	E Tap	E Deep	F	G	H	J	K	L	M	N	O	P	Q	R	BOLT SIZE	NO. OF BOLTS
6	10.50	9.50	11.00	0.75	4	3/4-10	1.25	7.06	12.31	5.88	1.496	2.31	3/8 SQ.	1.289	7.62	6.50	5.12	1/2-13	5/8	3/4	8
8	11.50	11.75	13.50	0.88	4	3/4-10	1.25	8.75	13.88	5.88	1.496	2.31	3/8 SQ.	1.289	7.75	6.50	5.12	1/2-13	5/8	3/4	8
10	13.00	14.25	16.00	1.00	4	7/8-9	1.25	10.44	17.06	7.06	2.120	2.50	1/2 SQ.	1.845	9.38	8.00	6.38	1/2-13	13/16	7/8	12
12	14.00	17.00	19.00	1.25	4	7/8-9	1.25	12.25	18.62	7.06	2.120	2.50	1/2 SQ.	1.845	9.38	8.00	6.75	1/2-13	13/16	7/8	12

Revised 9-22-05

ANSI CLASS 125 FLANGED CAM-CENTRIC® RECTANGULAR PLUG VALVE WITH BARE STEM

DATE 5-9-02

VAL-MATIC® VALVE AND MANUFACTURING CORP.

DRWG. NO.
VM-5806R