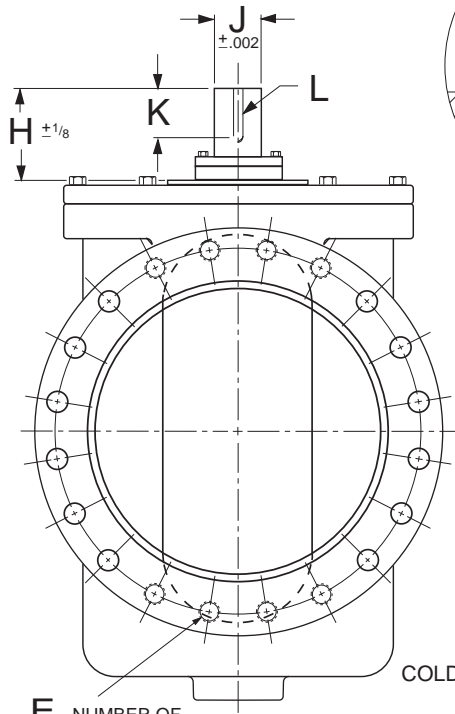
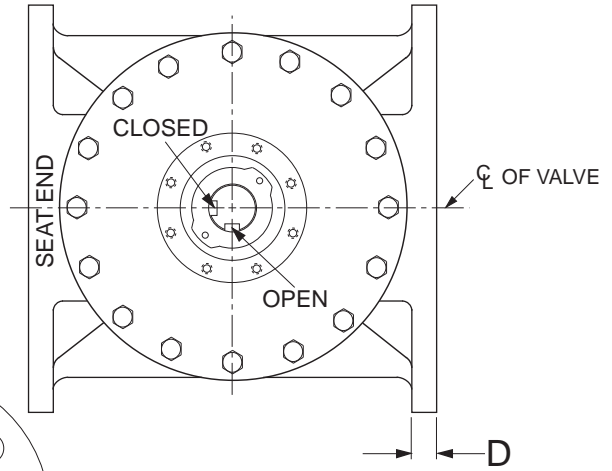
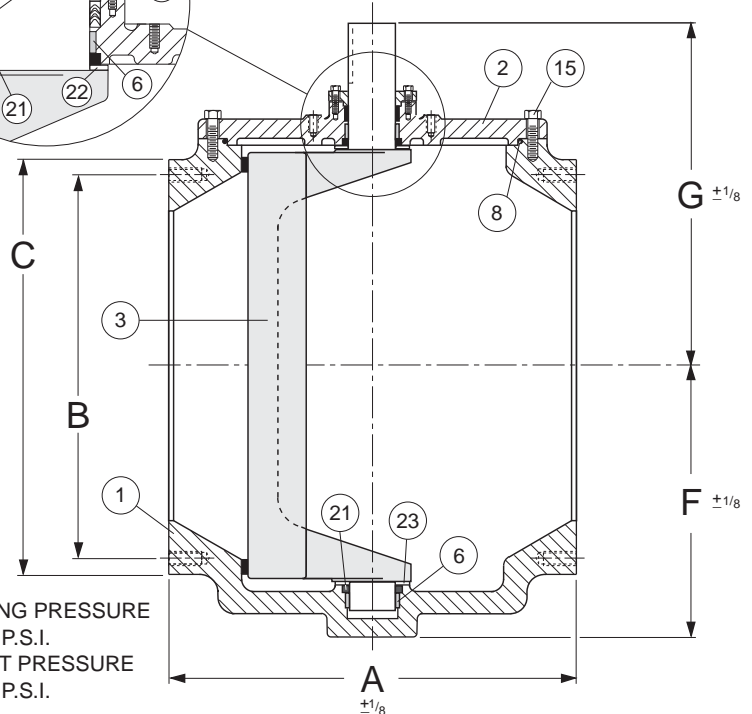
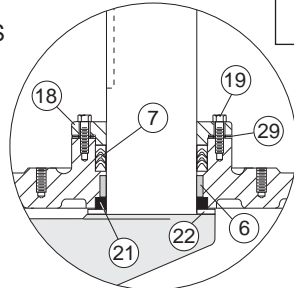


ACTUATOR MOUNTING DIMENSIONS

QTY. 4 VALVE SIZES 6"-10"  
 QTY. 8 VALVE SIZES 12"-30"  
 THREAD SIZE Q x R  
 DEEP TAPPED HOLES.



E NUMBER OF TAPPED HOLES PER FLANGE.



COLD WORKING PRESSURE  
 150 P.S.I.  
 HYDRO TEST PRESSURE  
 225 P.S.I.

SEE DRAWING NO. VM-5804RN-M FOR STANDARD MATERIALS OF CONSTRUCTION.

END FLANGE DRILLING CONFORMS TO ANSI B16.1

CLASS 125

VALVE SIZE	A	B	C	D	E QTY	E TAP	E DEEP	F	G	H	J	K	L	M	N	O	P	Q	R	BOLT SIZE	NO. OF BOLTS
6	13.50	9.50	11.00	0.75	4	3/4-10	1.13	8.75	13.88	5.88	1.496	2.31	3/8 SQ.	1.289	7.75	6.50	5.13	1/2-13	0.63	3/4	8
8	18.00	11.75	13.50	0.88	4	3/4-10	1.25	10.44	17.44	7.06	2.12	2.50	1/2 SQ.	1.845	9.38	8.00	6.38	1/2-13	0.81	3/4	12
10	17.00	14.25	16.00	1.00	8	7/8-9	1.38	12.25	18.25	7.06	2.12	2.50	1/2 SQ.	1.845	9.38	8.00	6.75	1/2-13	0.81	7/8	12
12	21.63	17.00	19.00	1.25	4	7/8-9	1.25	13.00	21.25	9.13	3.120	4.13	3/4 SQ.	2.704	11.44	10.00	6.75	5/8-11	0.88	7/8	12
14	22.50	18.75	21.00	1.38	4	1-8	1.56	14.50	22.56	9.13	3.120	4.13	3/4 SQ.	2.704	11.88	10.00	6.75	5/8-11	0.88	1	12
16	21.50	21.25	23.50	1.44	8	1-8	1.44	16.25	24.18	9.13	3.745	4.13	7/8 SQ.	3.261	12.00	10.00	7.38	5/8-11	1.13	1	16
18	23.50	22.75	25.00	1.56	8	1 1/8-7	1.75	17.50	25.50	9.13	3.745	4.13	7/8 SQ.	3.261	12.00	10.00	7.38	5/8-11	1.13	1 1/8	16
20	42.00	25.00	27.50	1.68	8	1 1/8-7	1.88	20.25	28.18	9.13	3.745	4.13	7/8 SQ.	3.261	12.00	10.00	7.38	5/8-11	1.13	1 1/8	20
24	42.00	29.50	32.00	1.88	12	1 1/4-7	1.88	24.00	33.75	10.75	4.995	6.00	1 1/4 SQ.	4.296	14.75	12.75	9.25	3/4-10	1.25	1 1/4	20
30	52.00	36.00	38.75	2.13	20	1 1/4-7	1.88	29.00	35.75	10.75	4.995	6.00	1 1/4 SQ.	4.296	14.75	12.75	9.25	3/4-10	1.25	1 1/4	28

Revised 12-5-11

100% PORT CLASS 125 FLANGED CAM-CENTRIC® PLUG VALVE

DATE 3-23-98



VALVE AND MANUFACTURING CORP.

DRWG. NO.

VM-5606R