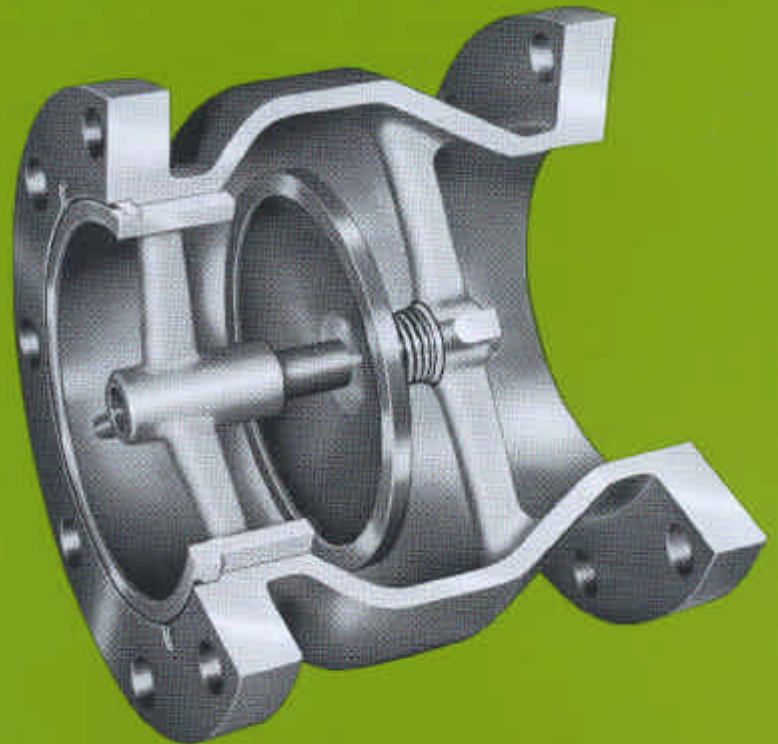


SHHH... SHHH...
**SHOCK-
PROOF
PIPING
SYSTEMS**

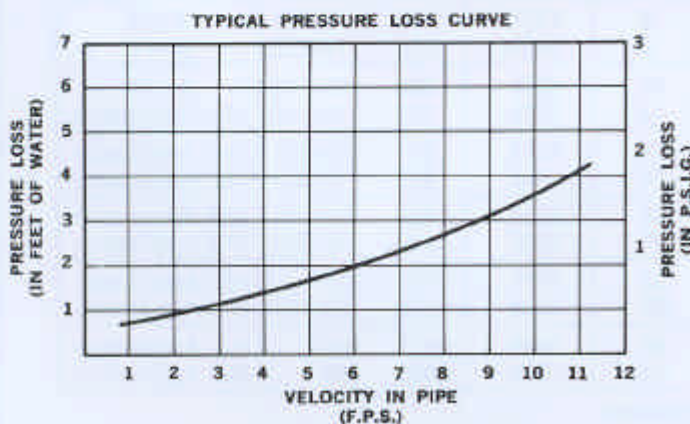


1800 SERIES

with **VAL-MATIC** **GLOBE STYLE
Silent Check Valves**

Designed and engineered for Silent operation with Low head loss. Specially designed spring controls the closure of Val-Matic Silent Check Valves . . . closing valve disc in advance of flow reversal, thereby preventing water hammer and damaging shock normally associated with valve shut-off.

Tear-Drop Contour **allows** streamline flow and combined with greater than Pipe Size Area of Inner Body **assures** minimal pressure drop.



NOTE: For specific valve size pressure loss curve . . . see drwg. No. 1404.

VAL-MATIC SILENT CHECK VALVES ARE ENGINEERED FOR SILENT OPERATION / LOW HEAD LOSS *Plus...*

- Double guided disc
- Large bearing surfaces
- Easily Replaceable Parts
- Functions Equally Well in All Positions
- Replaceable bronze bushing
- Drop-Tight Seating
- Cast Iron Body / Bronze or Stainless Steel Trim
- Mate-ability . . . Sizes 3" thru 10" valves mate to Wafer style butterfly valves without the use of spool pieces or any other adaptors.

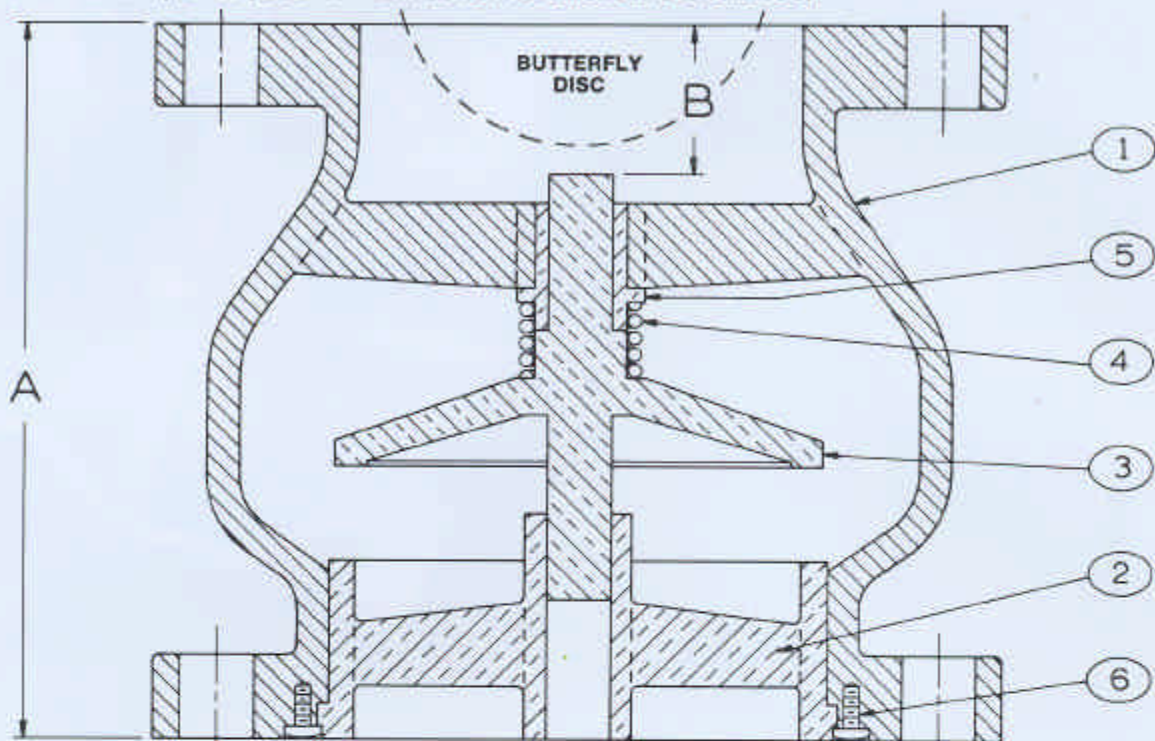
NOTE:

1. Val-Matic 1800 Series Globe-Style Silent Check Valves Are Intended for Liquid Service Only. For other service or materials of construction, consult factory.
2. Wafer Style Valves Also Available in 2" through 10" . . . See Val-Matic Bulletin 1400.

VAL-MATIC

VAL-MATIC VALVE AND MANUFACTURING CORP.

NOTE: Valve sizes 3" thru 10" will mate up to wafer style butterfly valves without the use of spool pieces or other adaptors. (See "B" dimension for allowable clearance).



Factory Mutual System
*Approved

PART NO.	NAME	MATERIAL
1	BODY	CAST IRON
2	SEAT	BRONZE
3	PLUG	BRONZE
4	SPRING	STAINLESS STEEL
5	BUSHING	BRONZE
6	SCREW	STAINLESS STEEL

FLANGE DIMENSIONS CONFORM TO ANSI STANDARDS.

ANSI CLASS 125				
Size	Model No.	Weight Lbs.	A	B
* 2½	1825	24	5-1/2	1
* 3	1803	29	6	1-3/8
* 4	1804	42	7-1/4	1-3/4
* 5	1805	52	8-1/2	2
* 6	1806	73	9-3/4	2-1/2
* 8	1808	126	12-1/2	3-1/4
*10	1810	205	15-1/2	4-1/4
*12	1812	306	14-1/4	Not Applicable
14	1814	380	15-3/4	Not Applicable
16	1816	501	17-5/8	Not Applicable
18	1818	724	18-3/4	Not Applicable
20	1820	890	20-5/8	Not Applicable
24	1824	1220	24	Not Applicable
30	1830	2000	29-1/4	Not Applicable
36	1836	4421	45	Not Applicable
42	1842	7203	50	Not Applicable

ANSI CLASS 250				
Size	Model No.	Weight Lbs.	A	B
2½	1875	30	5-1/2	1
3	1853	36	6	1-3/8
4	1854	59	7-1/4	1-3/4
5	1855	78	8-1/2	2
6	1856	103	9-3/4	2-1/2
8	1858	179	12-1/2	3-1/4
10	1860	253	15-1/2	4-1/4
12	1862	401	14-1/4	Not Applicable
14	1864	511	15-3/4	Not Applicable
16	1866	697	17-5/8	Not Applicable
18	1868	959	18-3/4	Not Applicable
20	1870	1180	20-5/8	Not Applicable
24	1874	1680	24	Not Applicable
30	1880	2375	29-1/4	Not Applicable
36	1886	5511	45	Not Applicable
42	1892	8663	50	Not Applicable

NOTE: 1) Refer to drawing SS120 for pressure and temperature limitations.
2) Additional materials and pressure classifications available.

VAL-MATIC

VAL-MATIC VALVE AND MANUFACTURING CORP.
905 RIVERSIDE DRIVE • ELMHURST, IL 60126
630/941-7600 • TELEX: 28-1001 • FAX: 630/941-8042
Copyright © 1987 Val-Matic Valve and Mfg. Corp.

DISTRIBUTED BY

PRINTED IN U.S.A.